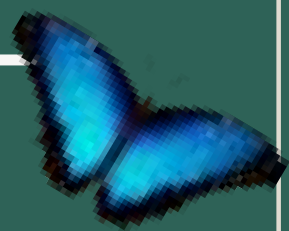




INFORMATION GUIDE

OUR WILDLIFE



NOMADE
TEMPLE

Destination



EMPRESA
SOCIALMENTE
RESPONSABLE



INTRODUCTION



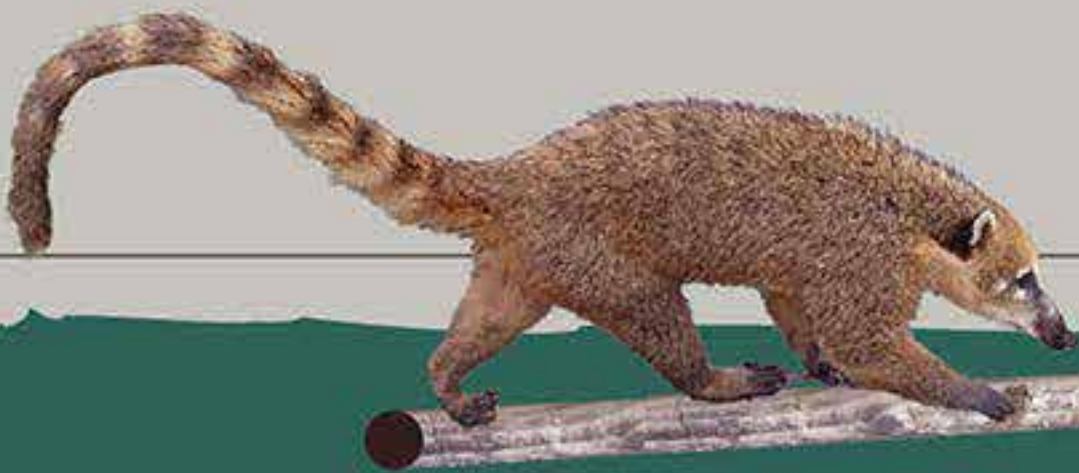
Knowing the biodiversity that is part of our environment is the first step to valuing nature and wanting to conserve it.

Remember that all living beings are part of nature, and to achieve a harmonious relationship, we have to respect its processes.

In the following guide you will find information about the fauna that inhabits Be Tulum Destination and Nômade Temple, that is, animals with which you will share space during your stay with us.

OBJECTIVE

Foster a relationship of respect and harmony between us and the animals that inhabit Be Tulum Destination and Nômade Temple.



“

THE UTMOST RESPECT THAT CAN BE SHOWN FOR MOST ANIMALS IS NOT ABOUT TRYING TO HELP THEM, BUT ABOUT LEAVING THEM ALONE, RESPECTING THEIR WILD LIFE AND ALLOWING THEM TO LIVE THEIR LIVES IN THEIR SPACE”

- JESÚS MOSTERIN

HOW TO ACT WHEN ENCOUNTERING WILDLIFE

NOTIFY YOUR CONCIERGE OR HOTEL RECEPTION

The Frontdesk staff will call the CSR y Prevention areas:
Radio channel #7, Prev. Canal #4

1 Was I injured or scared by wild life?

YES

• Notify your Concierge or Hotel Reception, they will call Prevention and wait for SRE for animal containment.

NO

• Check in the catalog if the animal is dangerous.

2 Is it dangerous?

YES

• Do not touch the animal.
• Wait for the arrival of CSR to take care of the situation.

NO

• Do not touch the animal.
• Let it continue on its way.
• Notify your Concierge or Hotel Reception.

3 Is the animal alive?

YES

• Keep a safe distance and let it continue on its way.
• Notify your Concierge or Hotel Reception, they will call Prevention.

NO

• No lo topes
• Notify your Concierge or Hotel Reception, they will call Prevention and wait for SRE for animal containment.

4 It is injured?

YES

• Do not touch the animal.
• Wait for the arrival of CSR to take care of the situation.

NO

• Do not touch the animal.
• Let it continue on its way.
• Notify your Concierge or Hotel Reception.

5 It is making you uncomfortable?

YES

• Notify your Concierge or Hotel Reception, they will call Prevention and wait for SRE for animal containment.

NO

Keep a safe distance and let it continue on its way.

6 Still present on the site?

YES

¿Obstaculiza el paso?
YES: Notify your Concierge or Hotel Reception, CSR relocates it.
NO: Keep a safe distance and let it continue on its way.

NO

Keep a safe distance, don't follow the animal, let it continue on its way.

HOW TO USE THIS GUIDE?

This guide is sorted by species, here we will find reptiles, mammals, birds, arthropods, and insects. Each section has the name and image of the specimen and the icons that indicate: if it is dangerous or not, its habits, what to do if you see it?, in which category of protection it is according to the law and the International Union for Conservation of Nature (IUCN), good practices to avoid their intrusion into areas and rooms, benefits of its presence, type of fauna, if it's a federal crime to touch them and if they have a harmful effect on human health.

SPECIES NAME

Level of
Danger



What to do if
I see it?



Benefits for
the
Environment



Habits



Good
Practices



Others



Category
NOM-059



Type of
Fauna

ICONOGRAPHY

LEVEL OF DANGER

-  Harmless
-  Moderately Dangerous
-  Very Dangerous





HABITS

-  Diurnal
-  Nocturnal
-  Arboreal
-  Terrestrial

WHAT TO DO IF I SEE IT?

-  Let it go its way
-  Avoid loud noises
-  Don't try to touch it
-  Don't feed it
-  Don't use flash for pictures
-  Avoid whitelight lamps



BENEFITS

-  Seed Disperser
-  Does not transmit Rabies
-  Pest Controller
-  Pollinates

TYPE OF FAUNA

-  Native
-  Endemic
-  Exotic
-  Invasive

OTHERS

-  Harmful to health
-  Don't touch, federal crime

IUCN CATEGORY

-  Vulnerable
-  In danger

NOM-059 PROTECTION CATEGORY

-  Critically Threatened
-  Threatened
-  Special protection

GOOD PRACTICES

-  Use the trash cans.
-  Keep the trash cans closed.
-  Cover any holes in the ceilings bigger than 5 cm
-  Trim branches near roofs.
-  Keep palm roofs lit up at night.
-  Place dust covers on doors facing outside.
-  Cover any 5 cm or smaller holes in walls and wooden floors.
-  Keep areas under rooms clean.

MAMMALS



Mexico ranks third in the world in mammal biodiversity with 564 species (PROFEPA, 2020).

123 of these, have been documented in the Yucatan Peninsula and 108 of them inhabit Quintana Roo.

The Sian Ka'an Biosphere Reserve is home to 74% of the terrestrial mammal species registered for Quintana Roo (94) and 16% of the 450 terrestrial mammals present in Mexico (Pozo de la Tijera, 1999). The most emblematic mammals in the area are the jaguars, peccaries, manatees, and tapirs.

YUCATECAN SQUIRREL

Level of
Danger



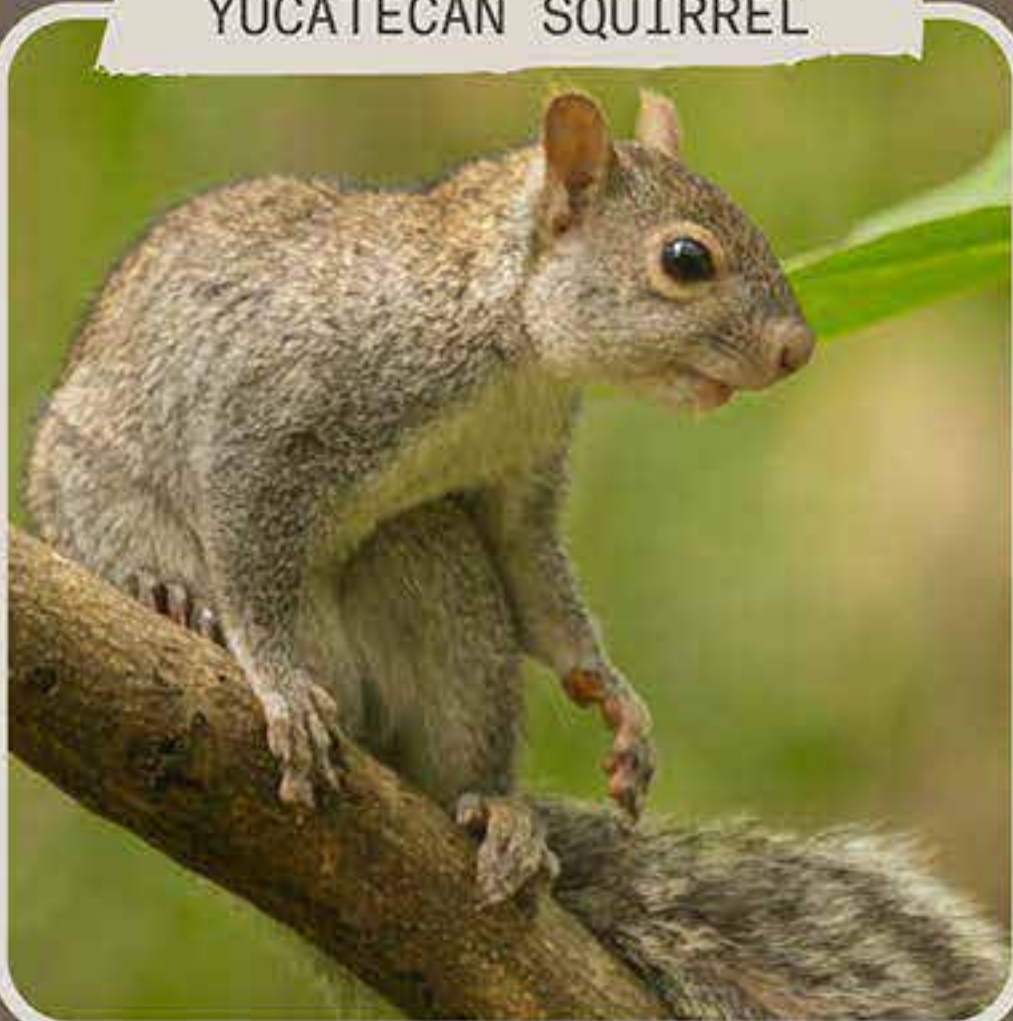
What to do if
I see it?



Benefits for
the
Environment



Type of
Fauna



Habits



Good
Practices



COATI

Level of
Danger



What to do if
I see it?



Benefits for
the
Environment



Type of
Fauna



Habits



Good
Practices



GREATER GRISON

Level of
Danger



What to do if
I see it?



Benefits for
the
Environment



Category

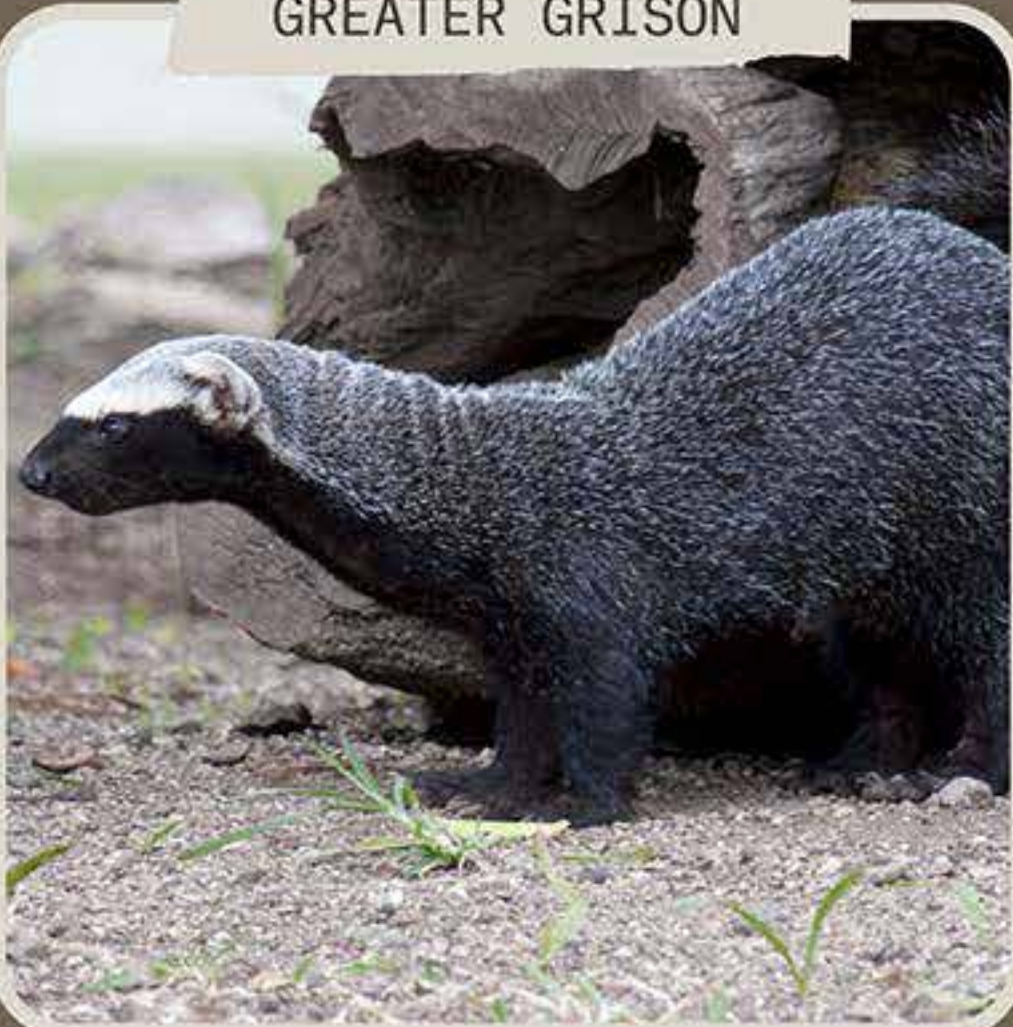


Type of
Fauna

Habits



Good
Practices



RACCOON

Level of
Danger



What to do if
I see it?



Benefits for
the
Environment



Category



Type of
Fauna

Habits



Good
Practices



FRUIT BAT

Level of
Danger



What to do if
I see it?



Benefits for
the
Environment



Others

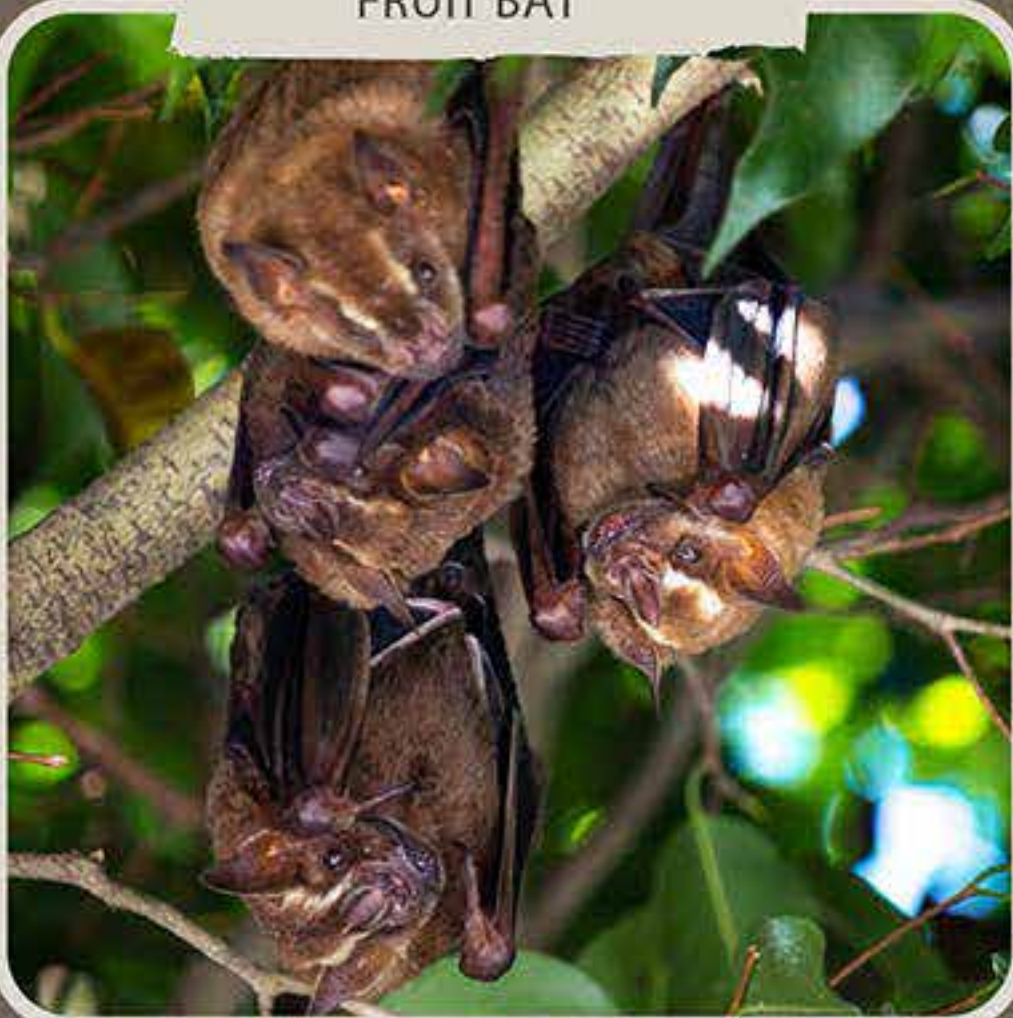


Type of
Fauna

Habits



Good
Practices



MEXICAN PORCUPINE

Level of
Danger



What to do if
I see it?



Benefits for
the
Environment



Category

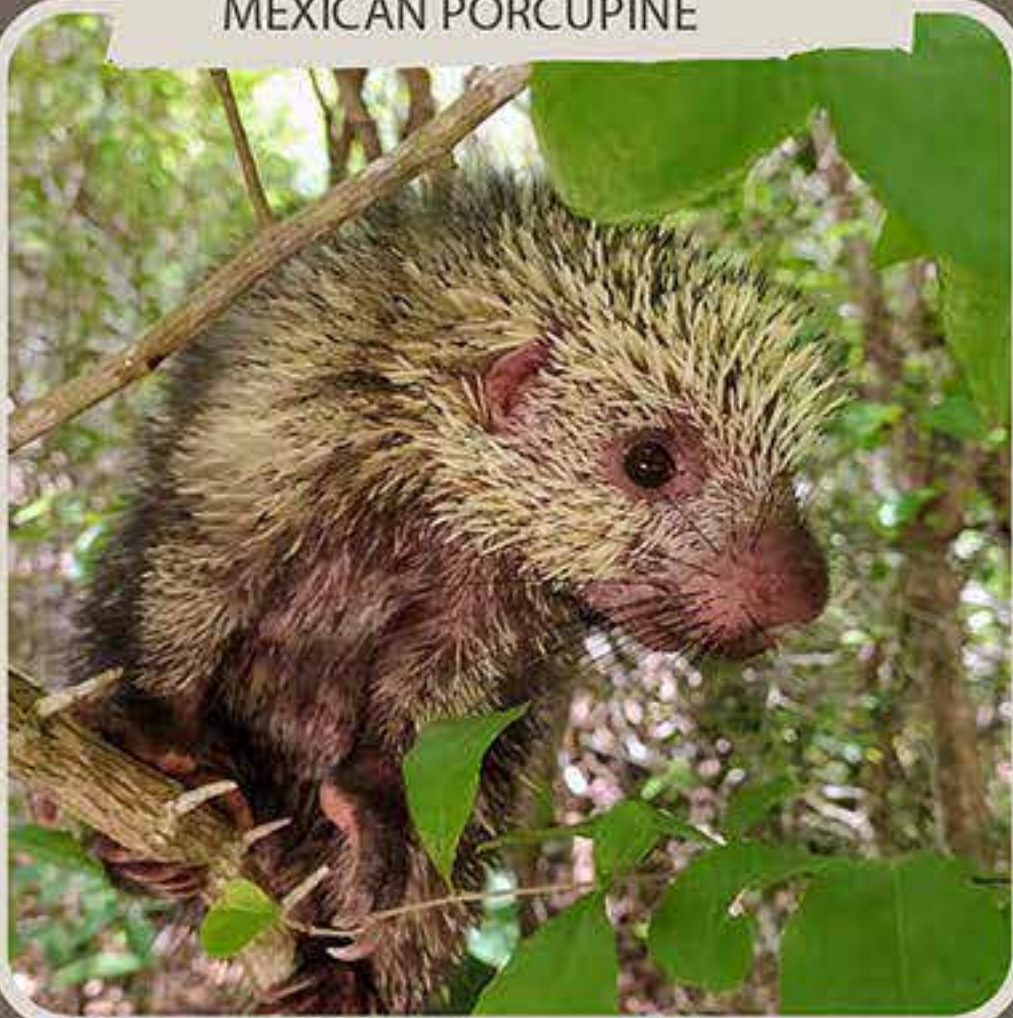


Type of
Fauna

Habits



Good
Practices



MEXICAN SEREQUE

Level of
Danger



What to do if
I see it?



Benefits for
the
Environment



Type of
Fauna

Habits



Good
Practices



BLACK RAT

Level of
Danger



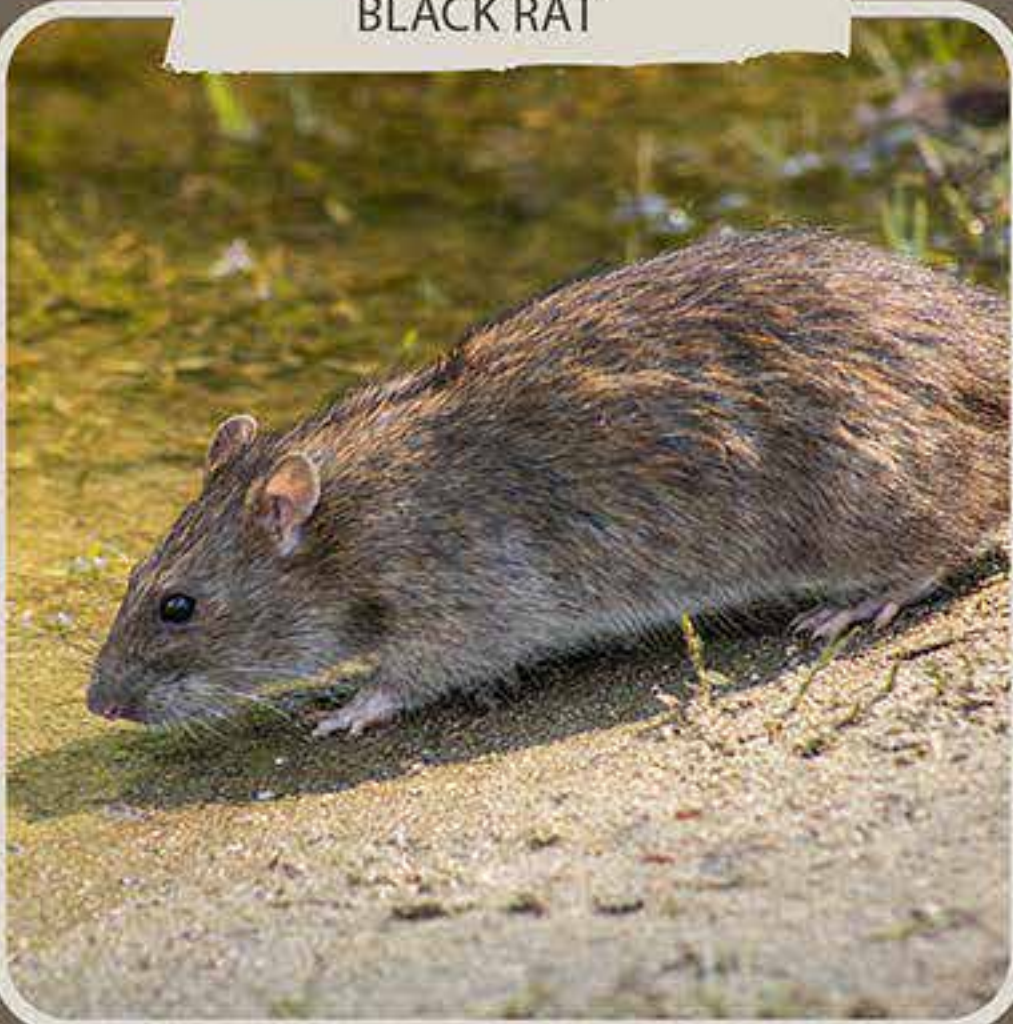
What to do if
I see it?



Habits



Good
Practices



Others



Type of
Fauna

COMMON MOUSE

Level of
Danger



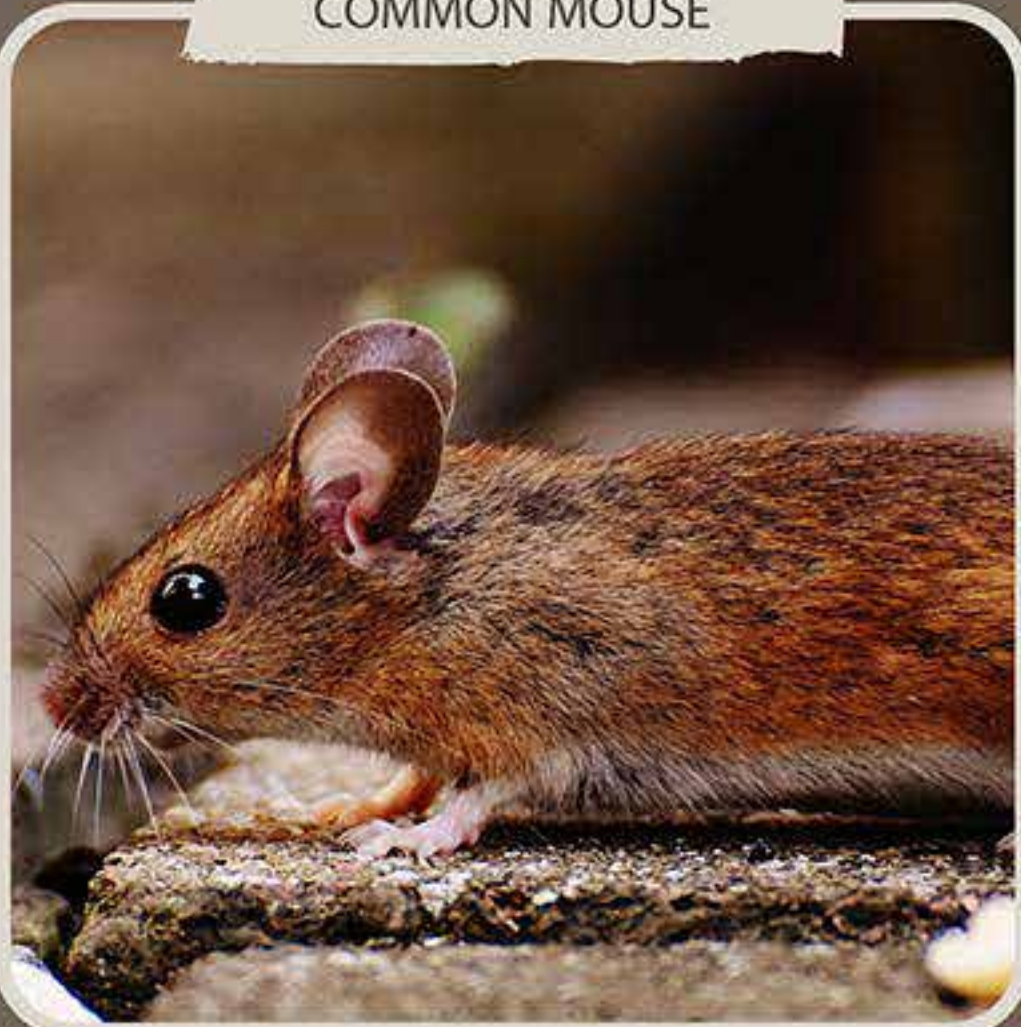
What to do if
I see it?



Habits



Good
Practices



Others



Type of
Fauna

OPOSSUM

Level of
Danger



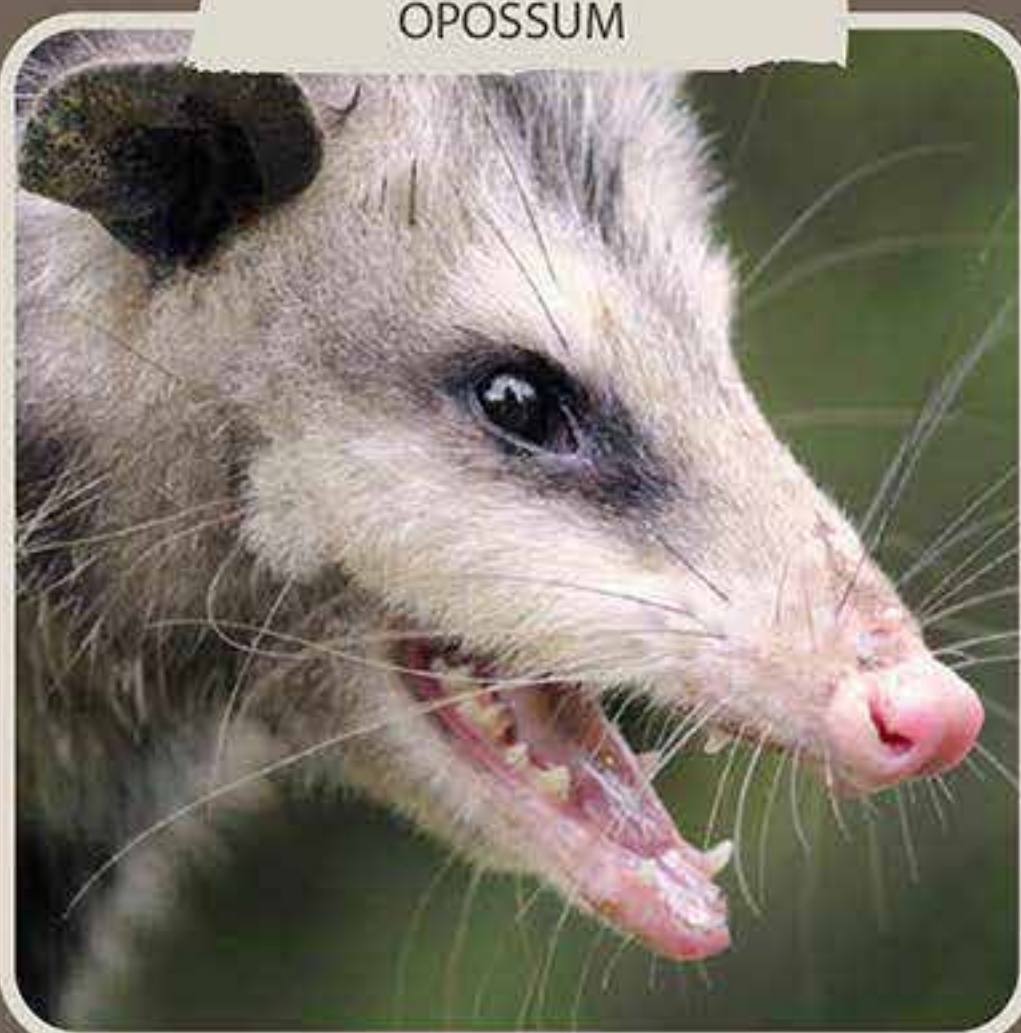
What to do if
I see it?



Habits



Good
Practices



Benefits for
the
Environment



Type of
Fauna

FOUR EYED OPOSSUM

Level of
Danger



What to do if
I see it?



Benefits for
the
Environment



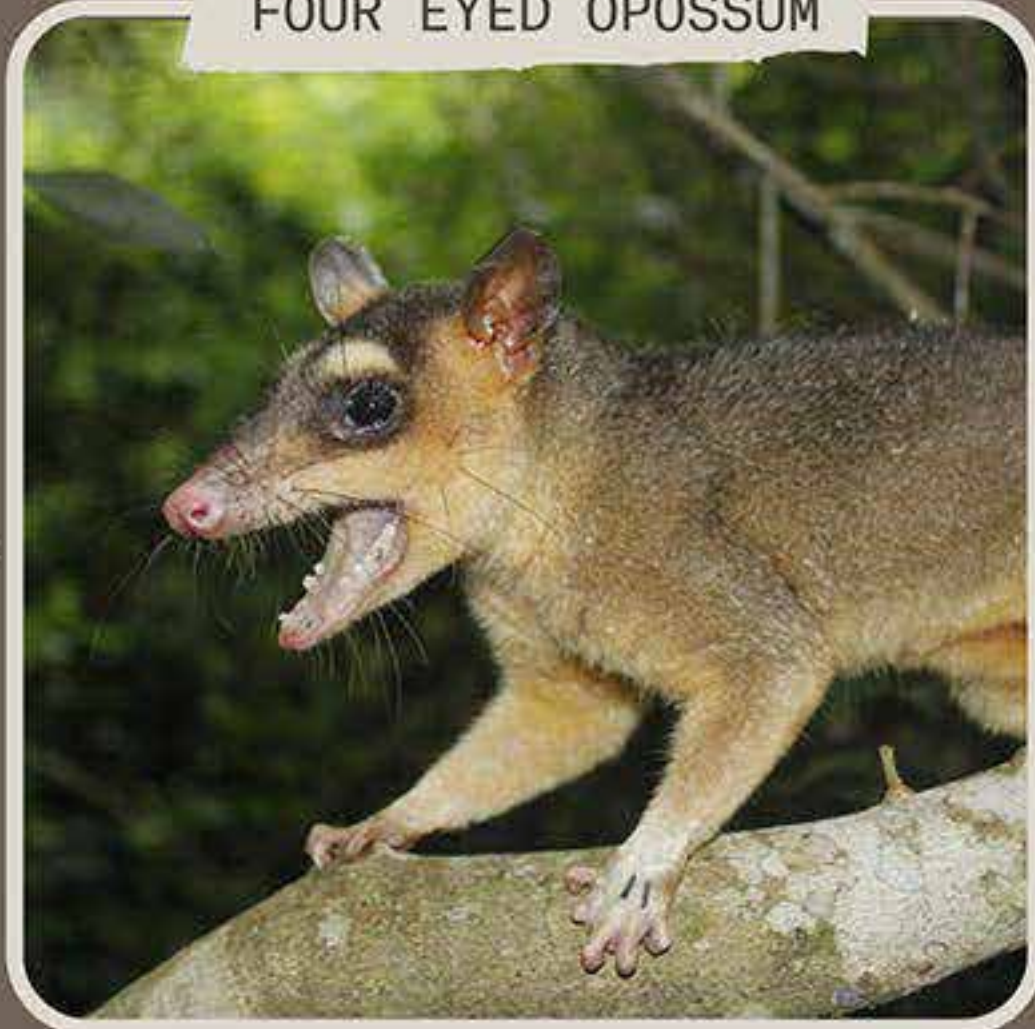
Habits



Good
Practices



Type of
Fauna



BIRDS



Mexico ranks 11th in the world by number of bird species. It's worth noting that of all the birds that inhabit our country, half are concentrated in the Yucatan Peninsula. In Quintana Roo alone we have 473 species (CONABIO, 2022).

In the biosphere reserve of Sian Ka'an, 326 species have been registered so far, of which 219 are residents, 65 wintering migratory, 20 transient migratory and 22 transient.

OSPREY

Level of
Danger



What to do if
I see it?

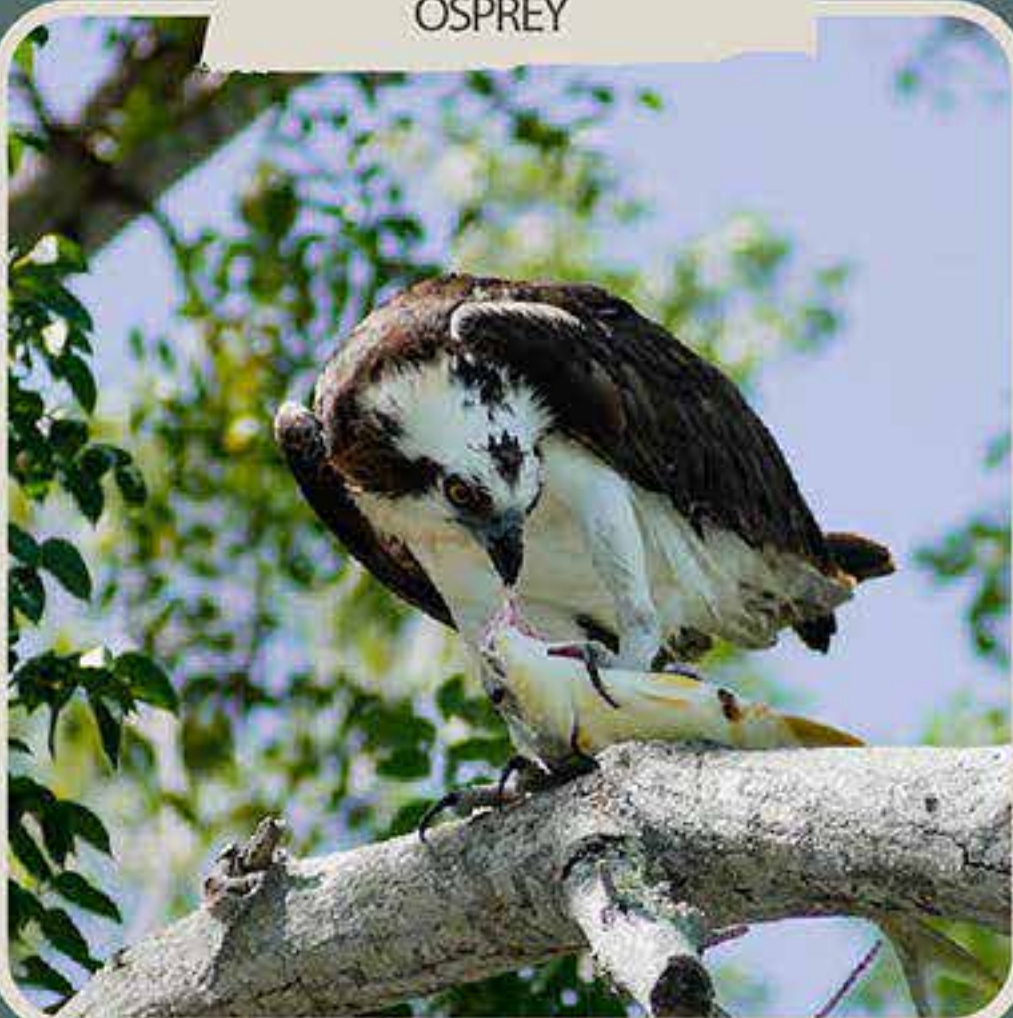


Benefits for
the
Envirorment



N

Type of
Fauna



Habits



Good
Practices



COMMON BLACK HAWK

Level of
Danger



What to do if
I see it?



Benefits for
the
Envirorment



Category

Pe

N

Type of
Fauna



Habits



Good
Practices



GREAT KISKADEE

Level of
Danger



What to do if
I see it?



Benefits for
the
Envirorment



N

Type of
Fauna

Habits



Good
Practices



ALTAMIRA ORIOLE

Level of
Danger



What to do if
I see it?



Benefits for
the
Envirorment



N

Type of
Fauna

Habits



Good
Practices



YELLOW BACKED ORIOLE

Level of
Danger



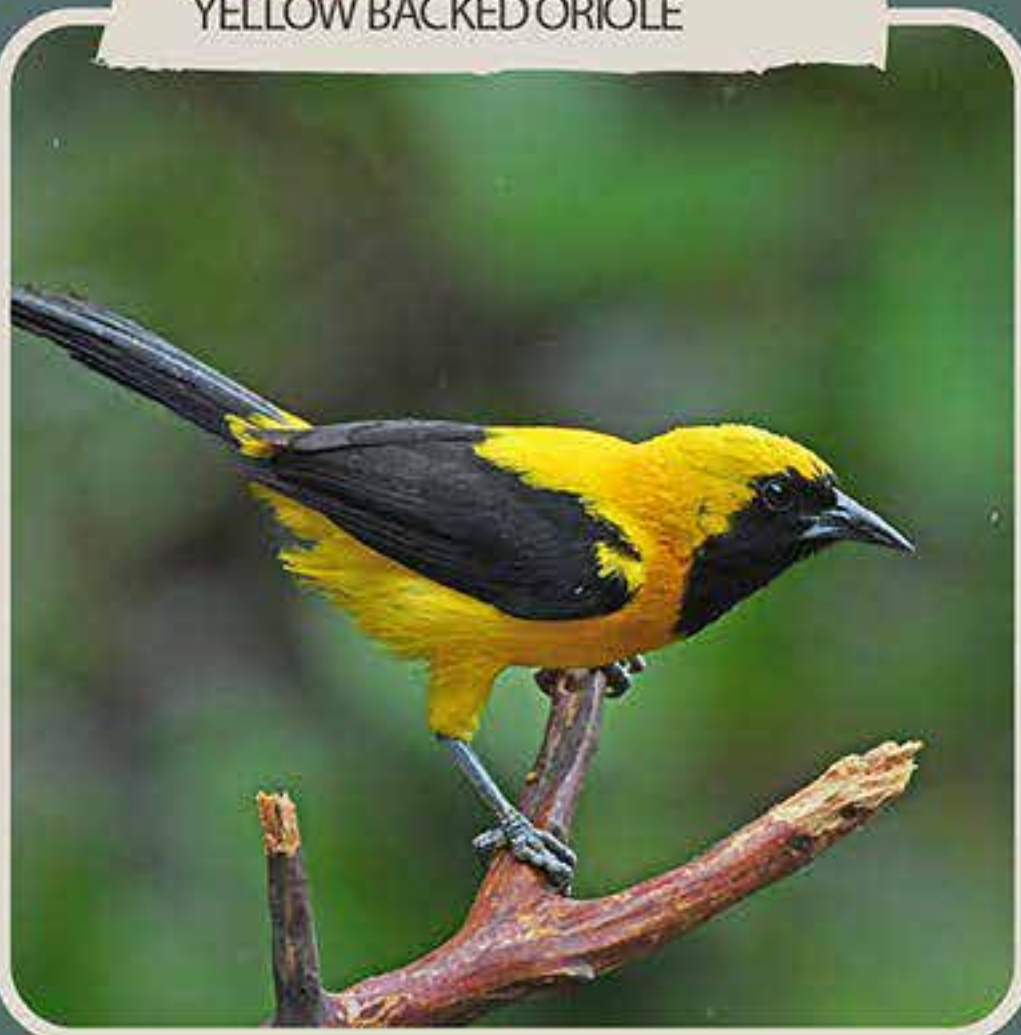
What to do if
I see it?



Benefits for
the
Environment



Type of
Fauna



Habits



Good
Practices



GOLDEN FRONTED WOODPECKER

Level of
Danger



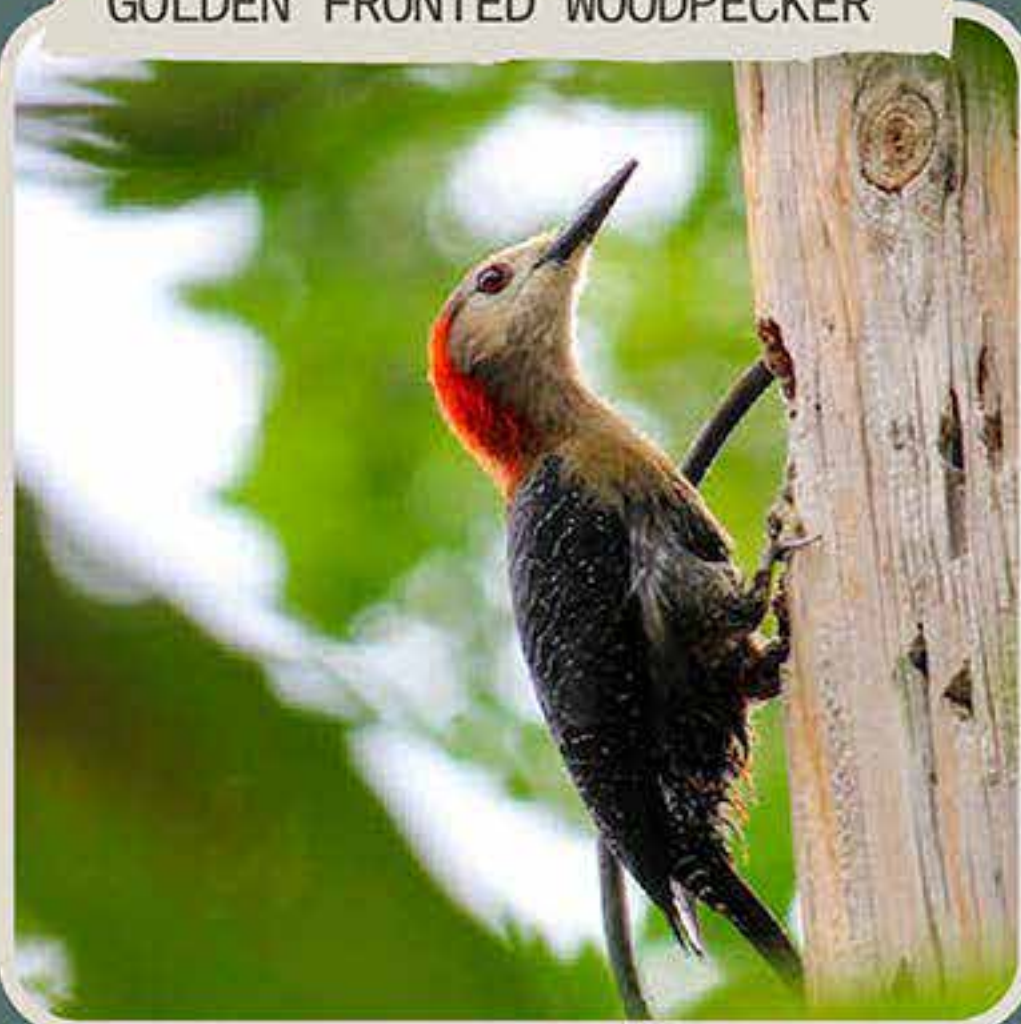
What to do if
I see it?



Benefits for
the
Environment



Type of
Fauna



Habits



Good
Practices



LINEATED WOODPECKER

Level of
Danger



What to do if
¿Qué hacer si lo veo?



Habits



Good
Practices



Benefits for
the
Environment



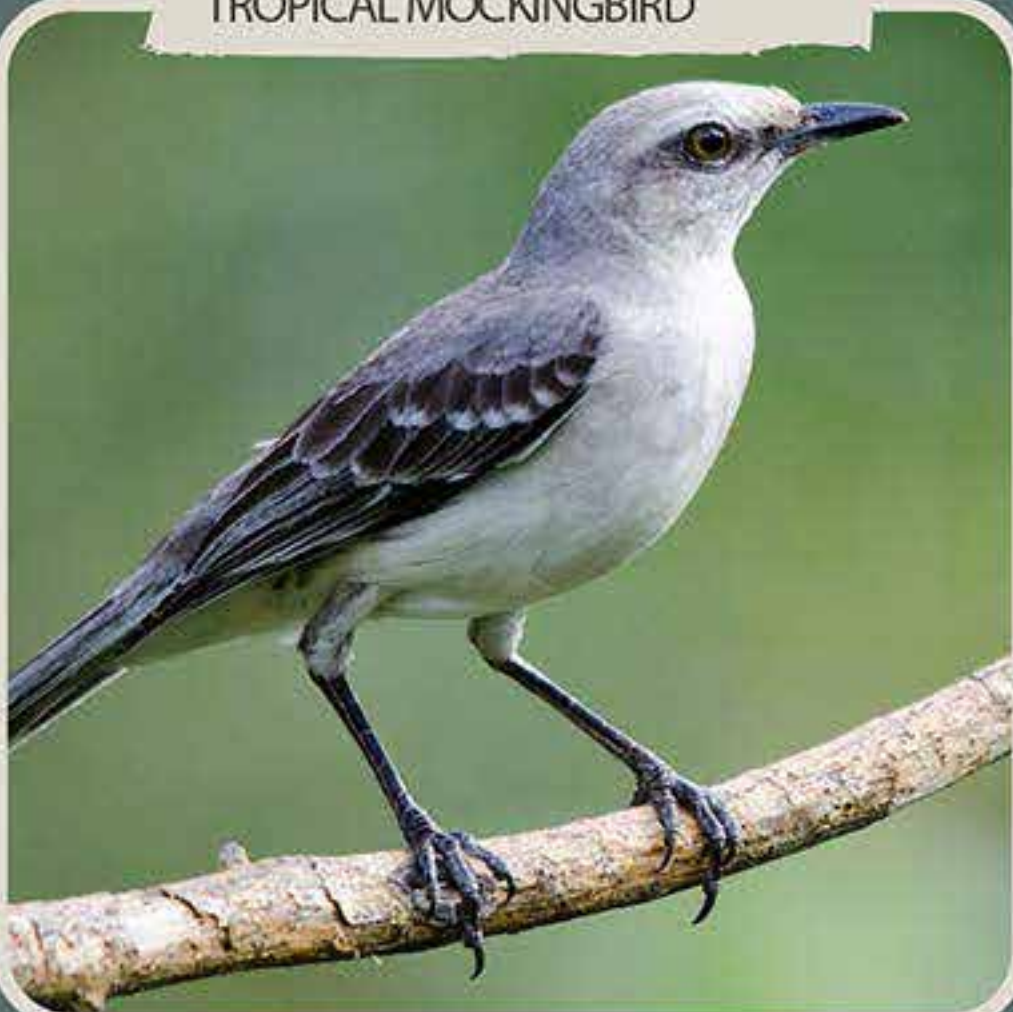
Type of
Fauna

TROPICAL MOCKINGBIRD

Level of
Danger



What to do if
I see it?



Habits



Good
Practices



Benefits for
the
Environment



Type of
Fauna

WEST MEXICAN CHACHALACA

Level of
Danger



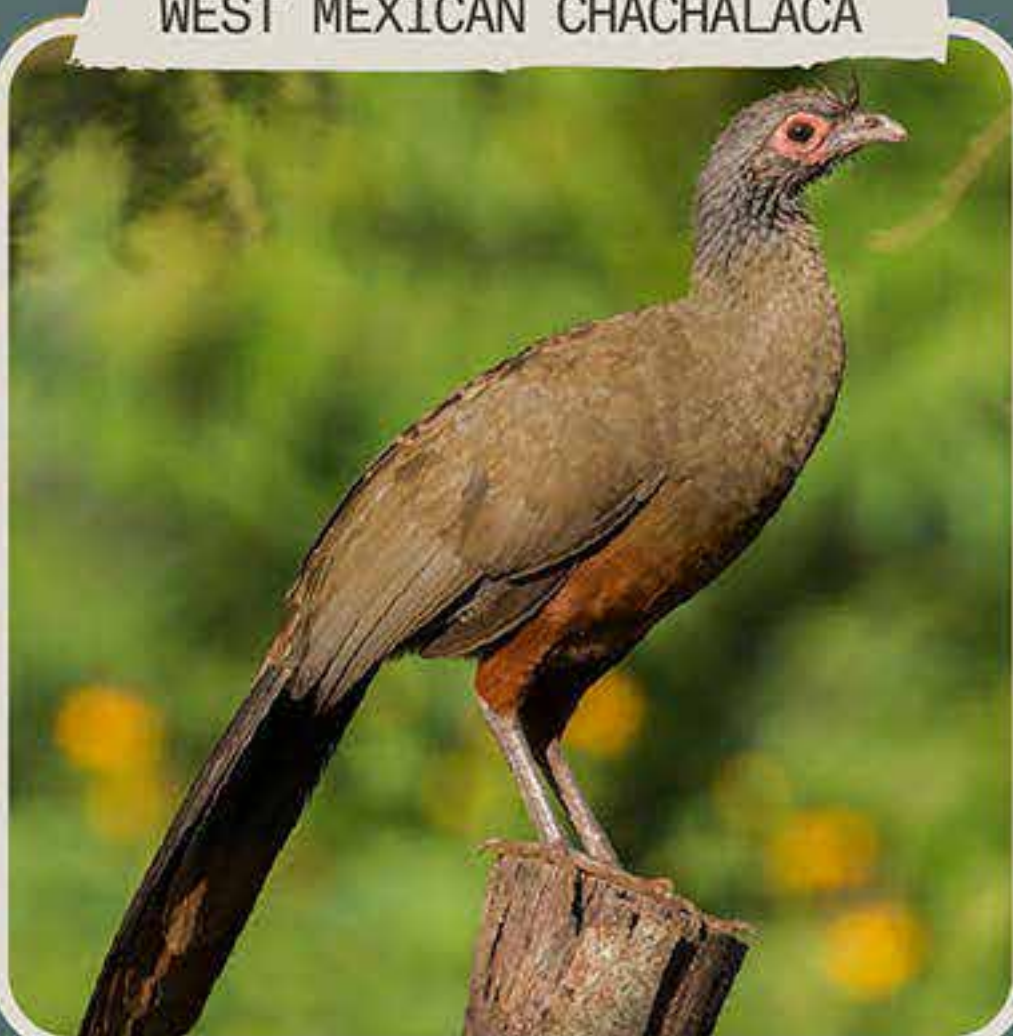
What to do if
I see it?



Benefits for
the
Envirorment



Type of
Fauna



Habits



Good
Practices



YUCATAN JAY

Level of
Danger



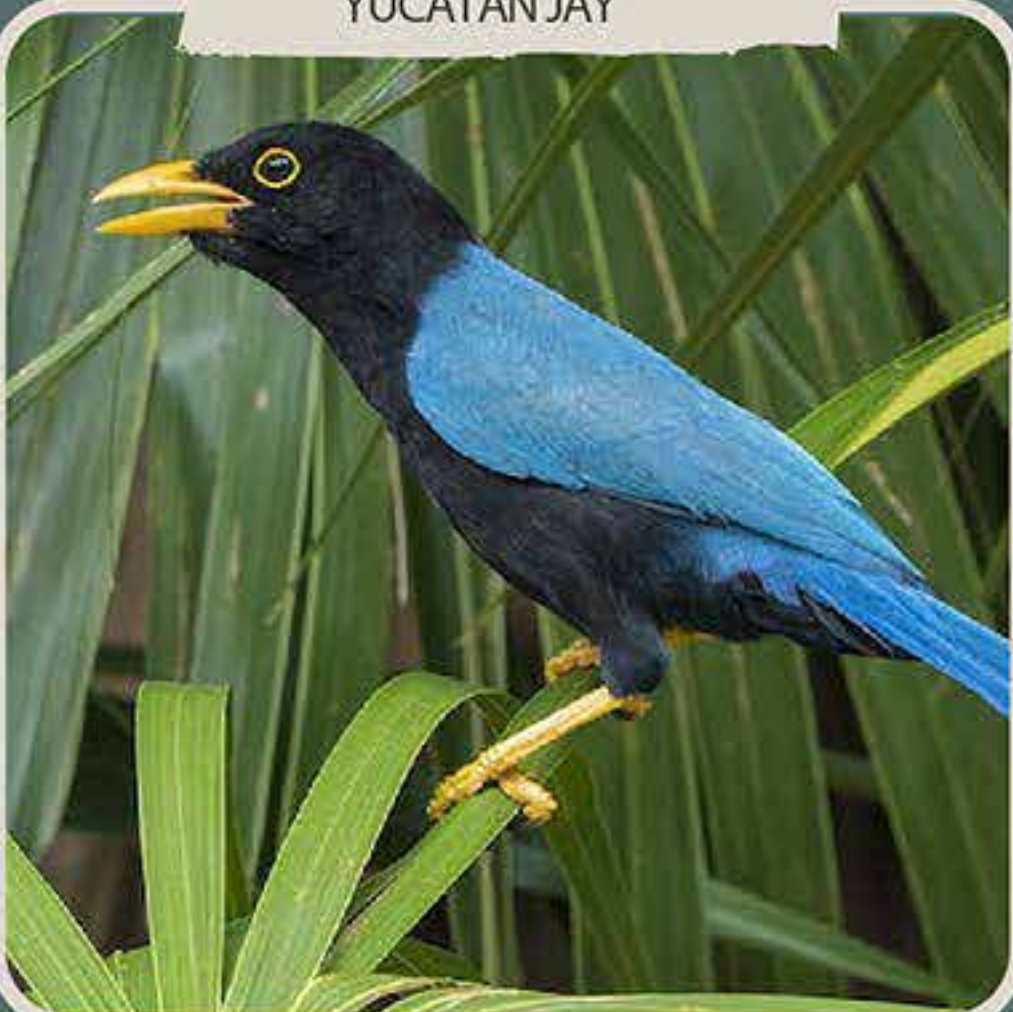
What to do if
I see it?



Benefits for
the
Envirorment



Type of
Fauna



Habits



Good
Practices



ROYAL TERN

Level of
Danger



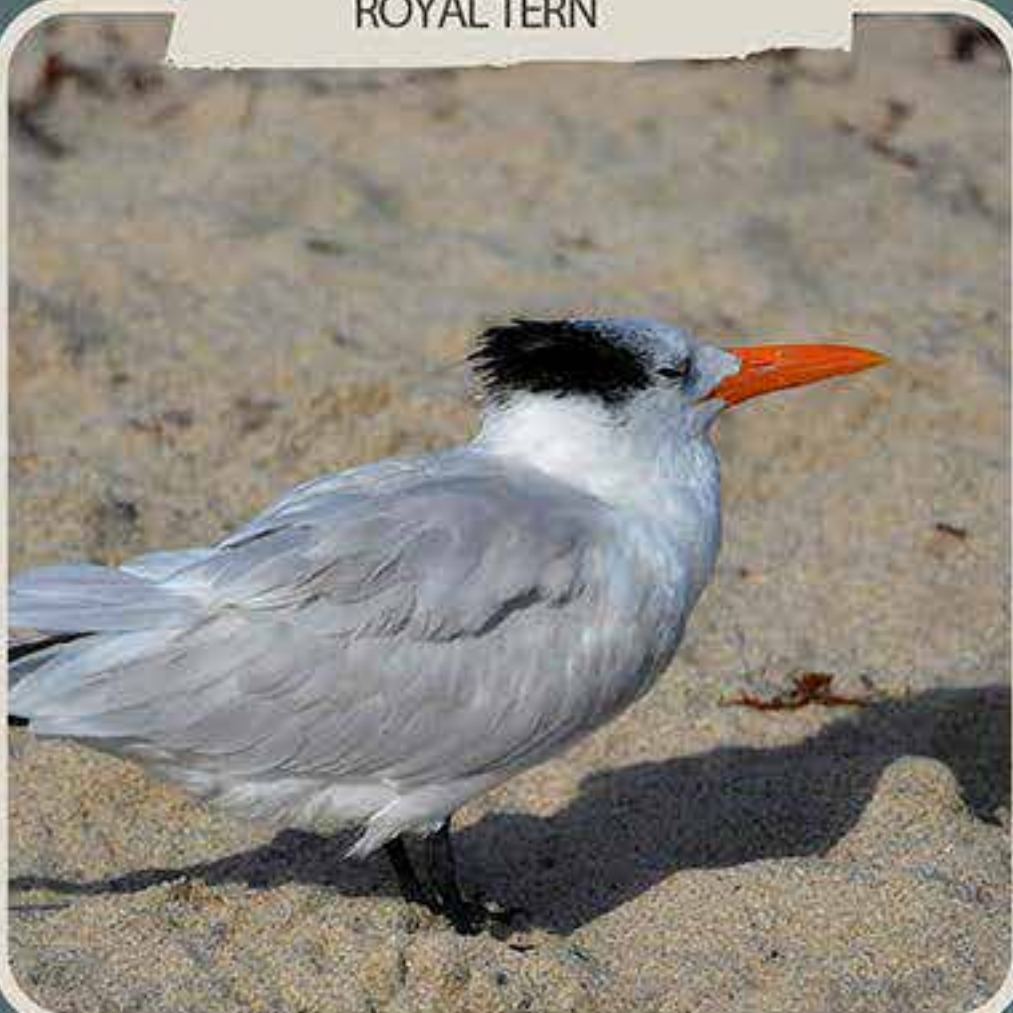
What to do if
I see it?



Benefits for
the
Envirorment



Type of
Fauna



Habits



Good
Practices



YELLOW WARBLER

Level of
Danger



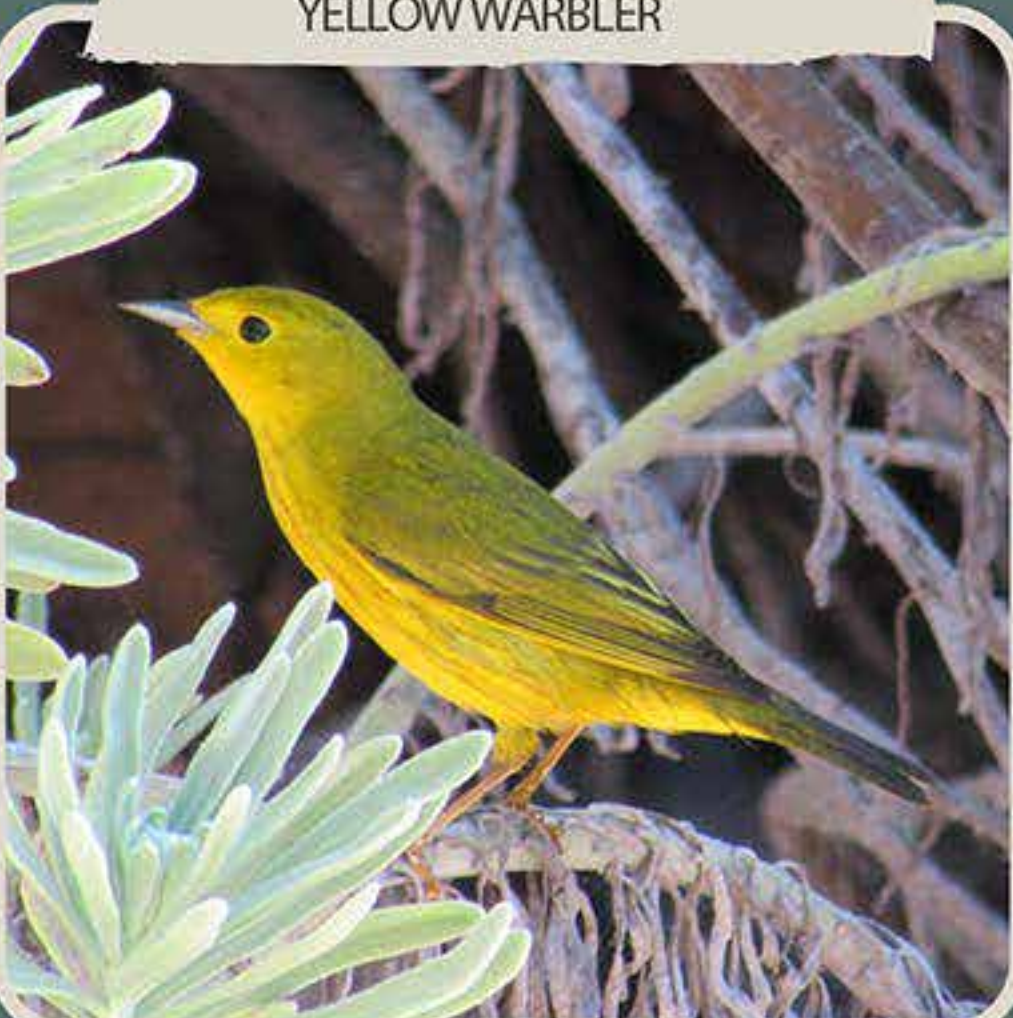
What to do if
I see it?



Benefits for
the
Envirorment



Type of
Fauna



Habits



Good
Practices



GOLDEN WARBLER

Level of
Danger



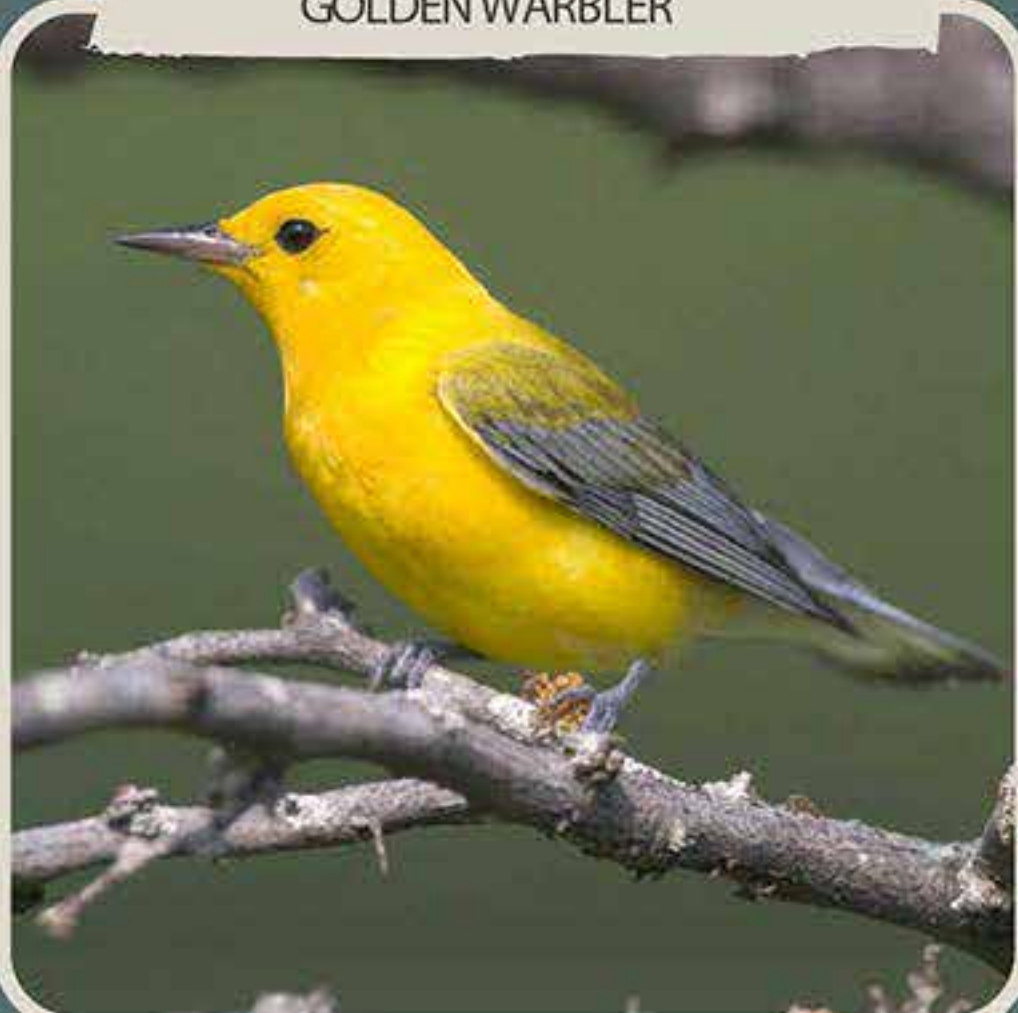
What to do if
I see it?



Benefits for
the
Envirorment



Type of
Fauna



Habits



Good
Practices



YELLOW-THROATED WARBLER

Level of
Danger



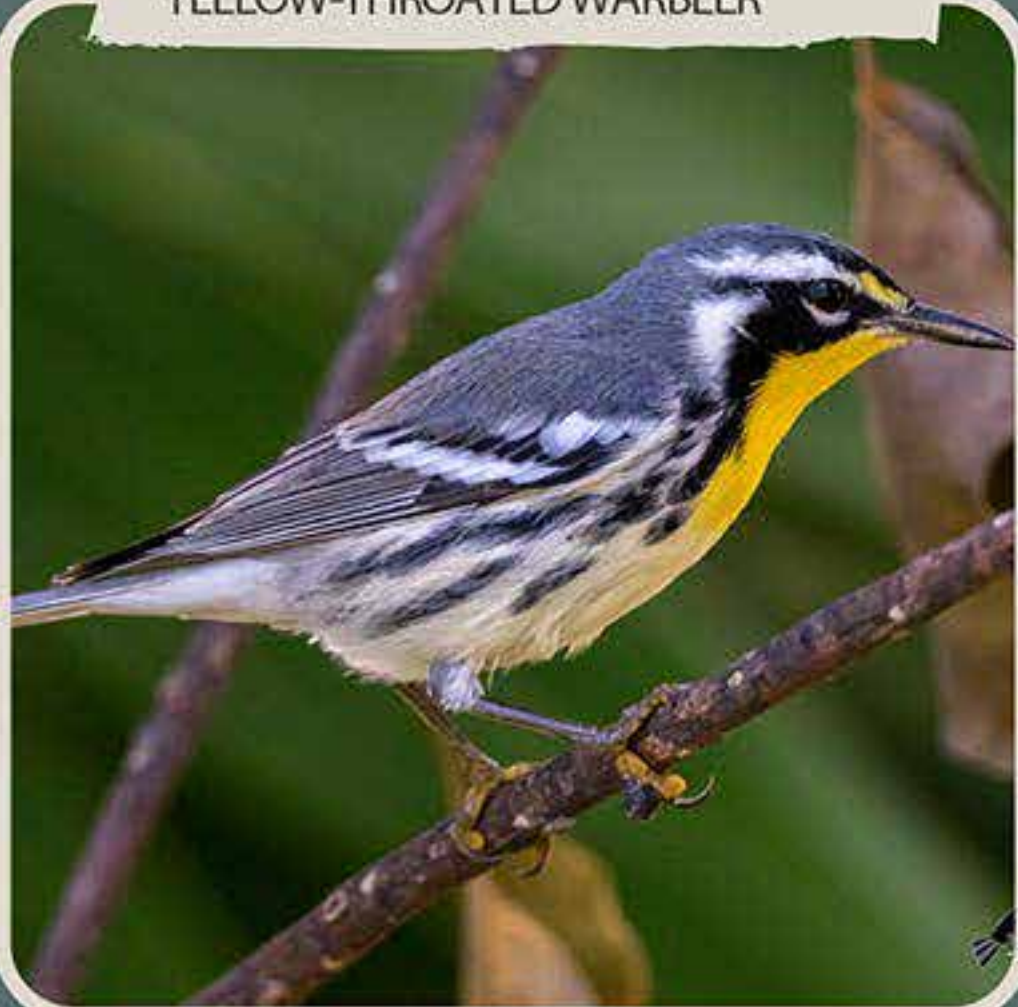
What to do if
I see it?



Benefits for
the
Envirorment



Type of
Fauna



Habits



Good
Practices



BLACK-HEADED TROGON

Level of
Danger



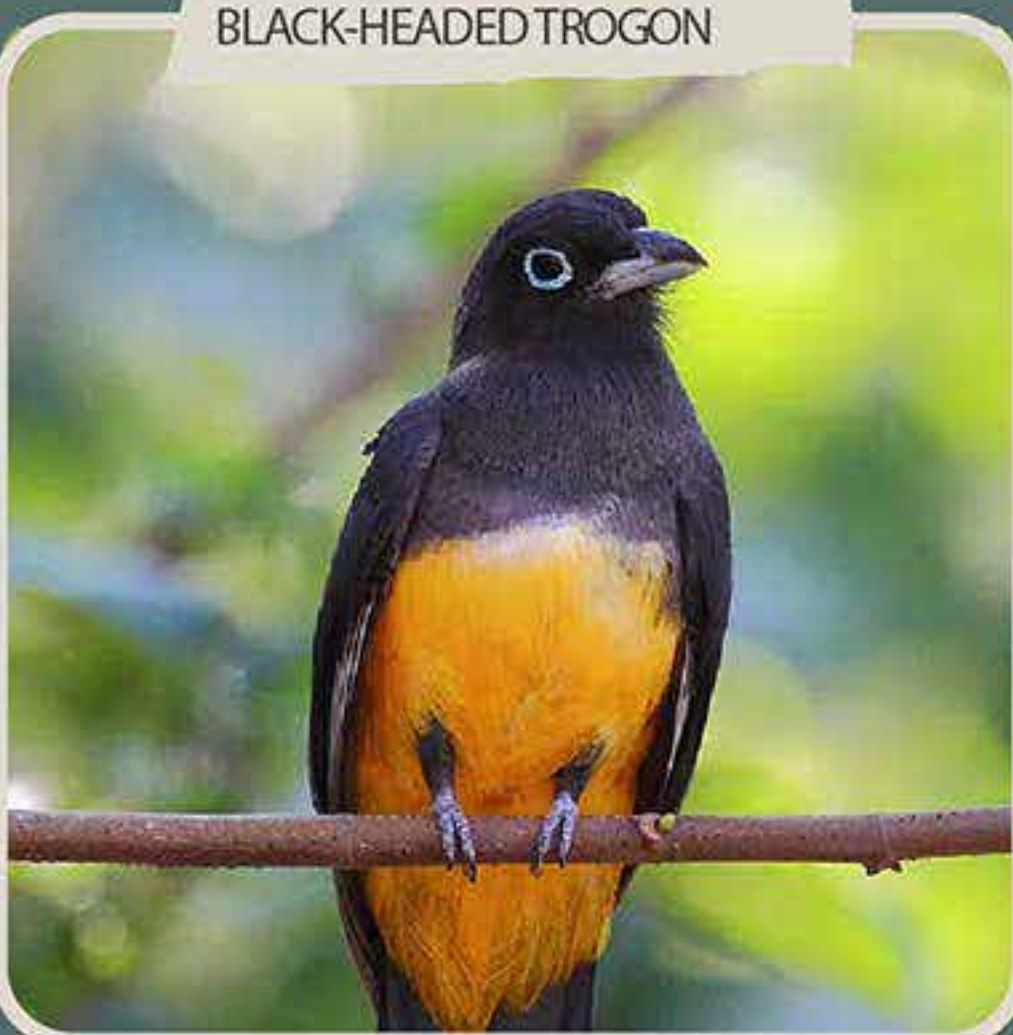
What to do if
I see it?



Benefits for
the
Envirorment



Type of
Fauna



Habits



Good
Practices



MAGNIFICENT FRIGATEBIRD

Level of
Danger



What to do if
I see it?



Benefits for
the
Envirorment



Type of
Fauna



Habits



Good
Practices



BLACK-HEADED GULL

Level of
Danger



What to do if
I see it?



Habits



Good
Practices



N

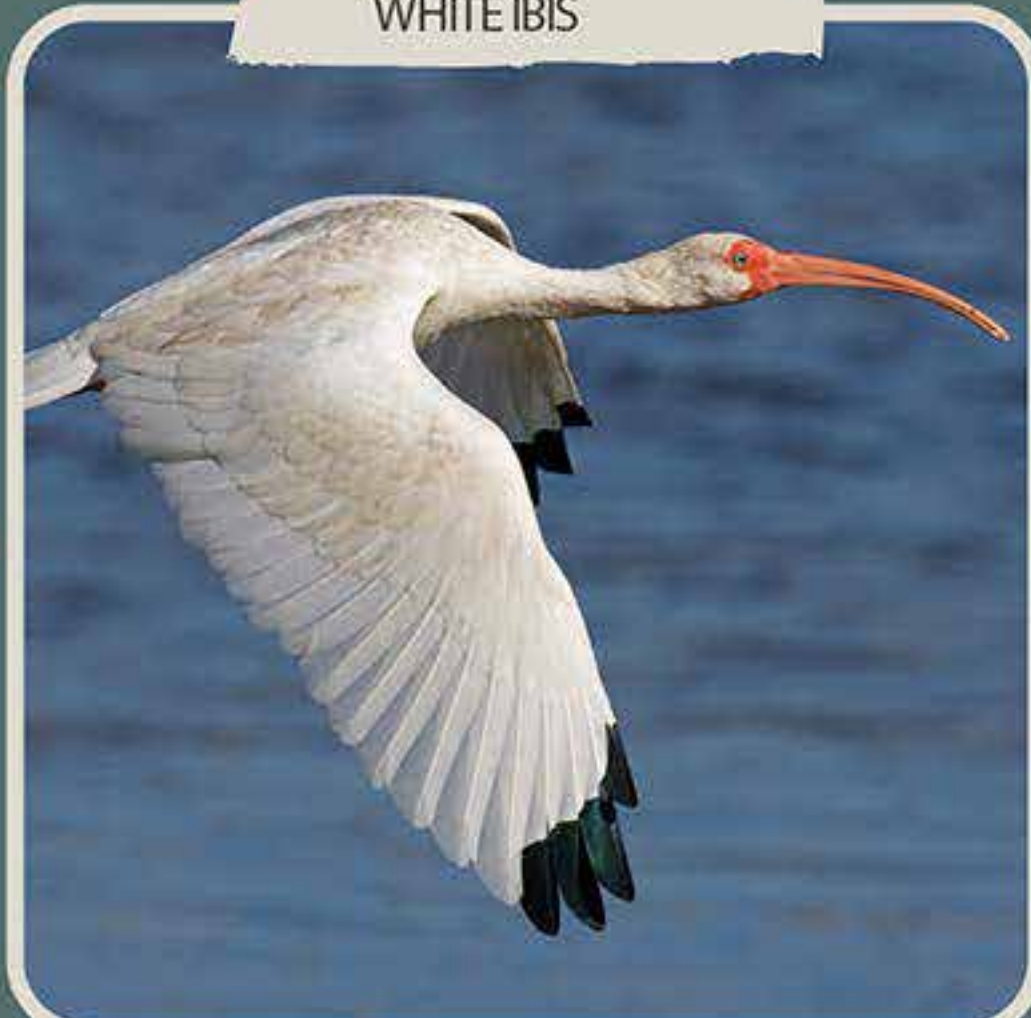
Type of
Fauna

WHITE IBIS

Level of
Danger



What to do if
I see it?



Habits



Good
Practices



Benefits for
the
Environment



WHITE-FRONTED AMAZON

Level of
Danger



What to do if
I see it?



Benefits for
the
Envirorment



Category

Pe

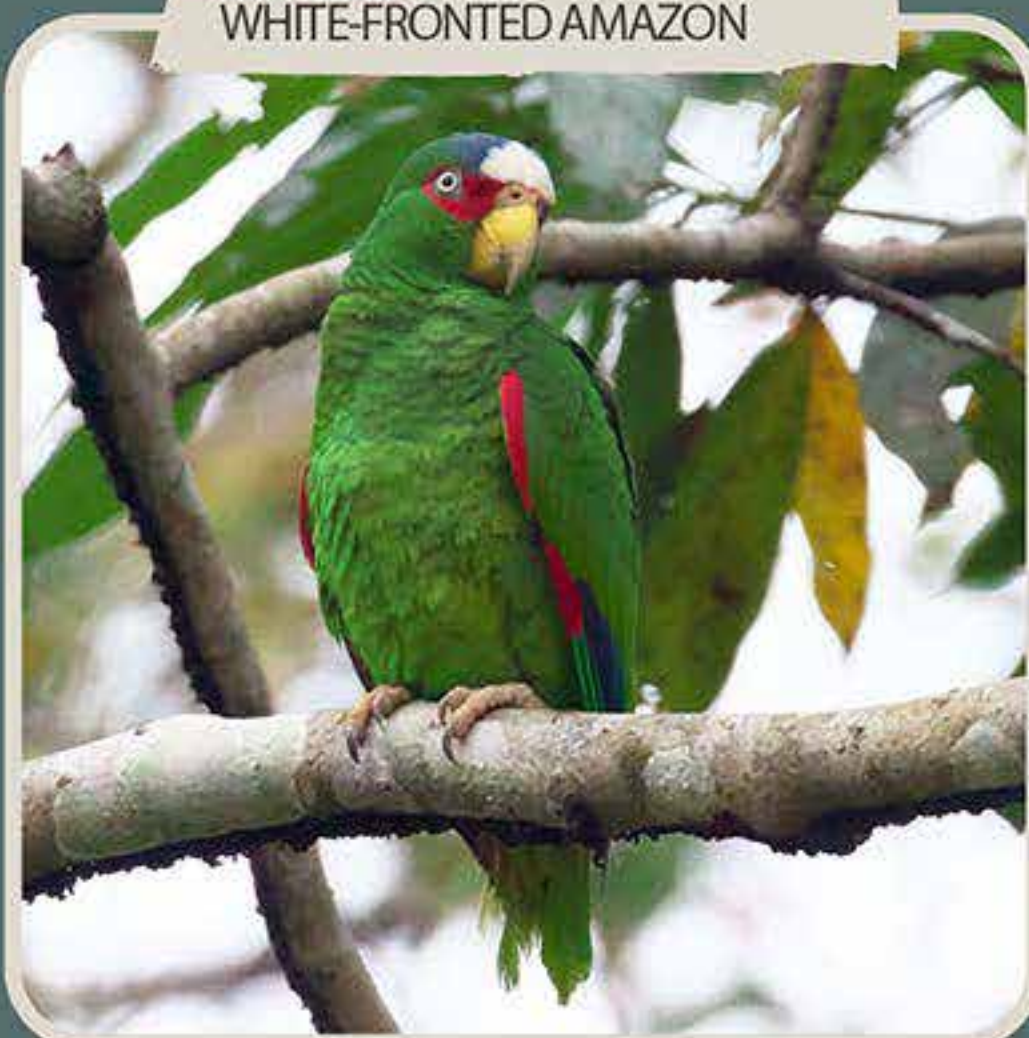
N

Type of
Fauna

Habits



Good
Practices



SOCIAL FLYCATCHER

Level of
Danger



What to do if
I see it?



Benefits for
the
Envirorment



Category

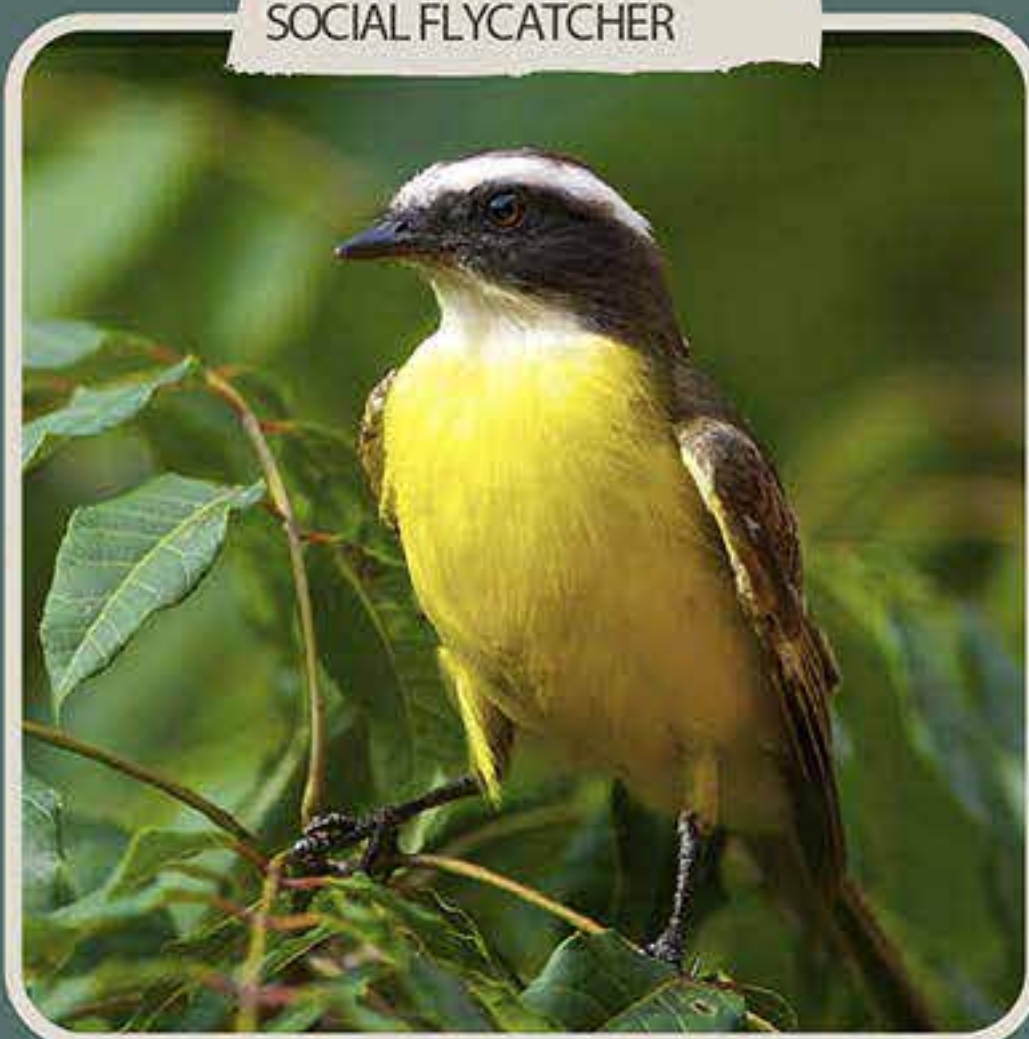
N

Type of
Fauna

Habits



Good
Practices



GRAY CATBIRD

Level of
Danger



What to do if
I see it?



Habits



Good
Practices



N

Type of
Fauna

YELLOW-BELLIED ELAENIA

Level of
Danger



What to do if
I see it?



Habits



Good
Practices



N

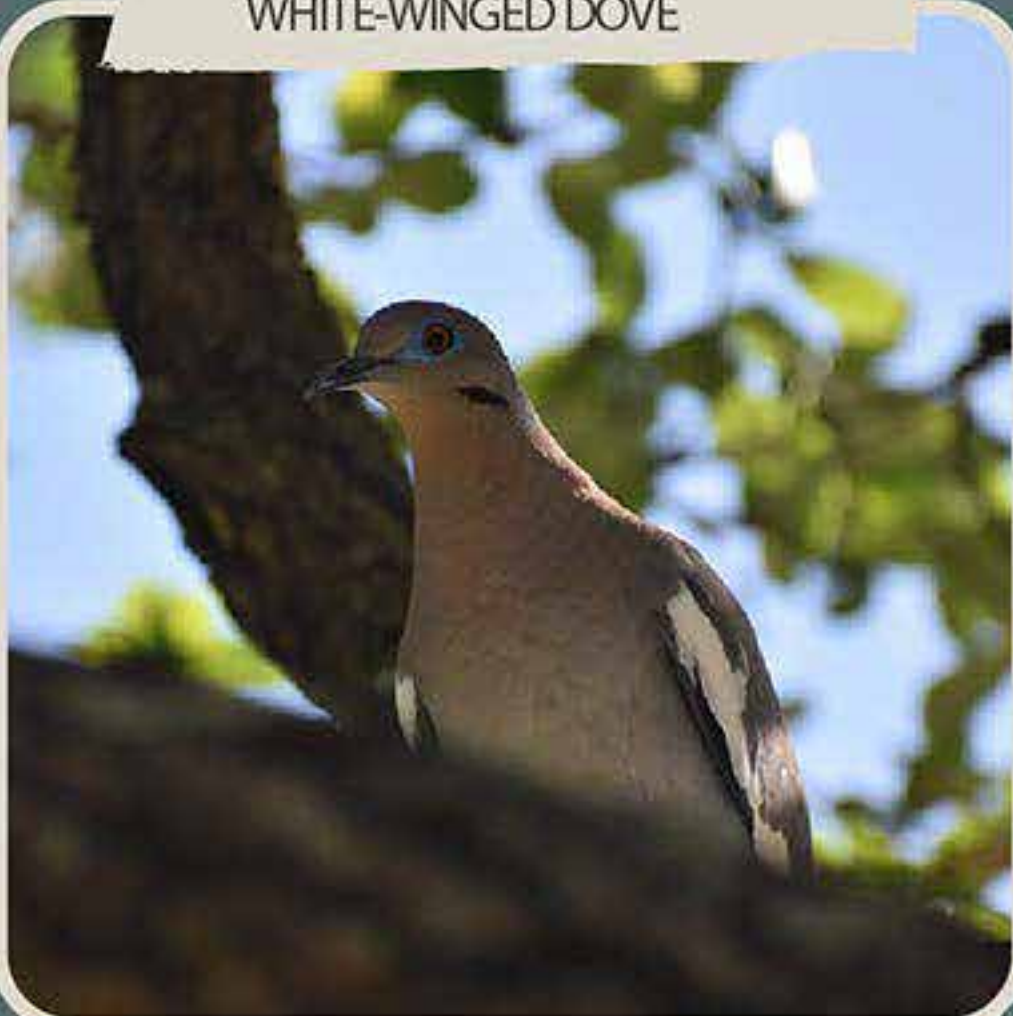
Type of
Fauna

WHITE-WINGED DOVE

Level of
Danger



What to do if
I see it?



Habits



Good
Practices



N

Type of
Fauna

BROWN PELICAN

Level of
Danger



What to do if
I see it?



Habits



Good
Practices



Benefits for
the
Environment



N

Type of
Fauna

OLIVE-THROATED PARAKEET

Level of
Danger



What to do if
I see it?



Benefits for
the
Environment



Pe

N

Type of
Fauna



Habits



Good
Practices



SCARLETTANAGER

Level of
Danger



What to do if
I see it?



Benefits for
the
Environment



Pe

N

Type of
Fauna



Habits



Good
Practices

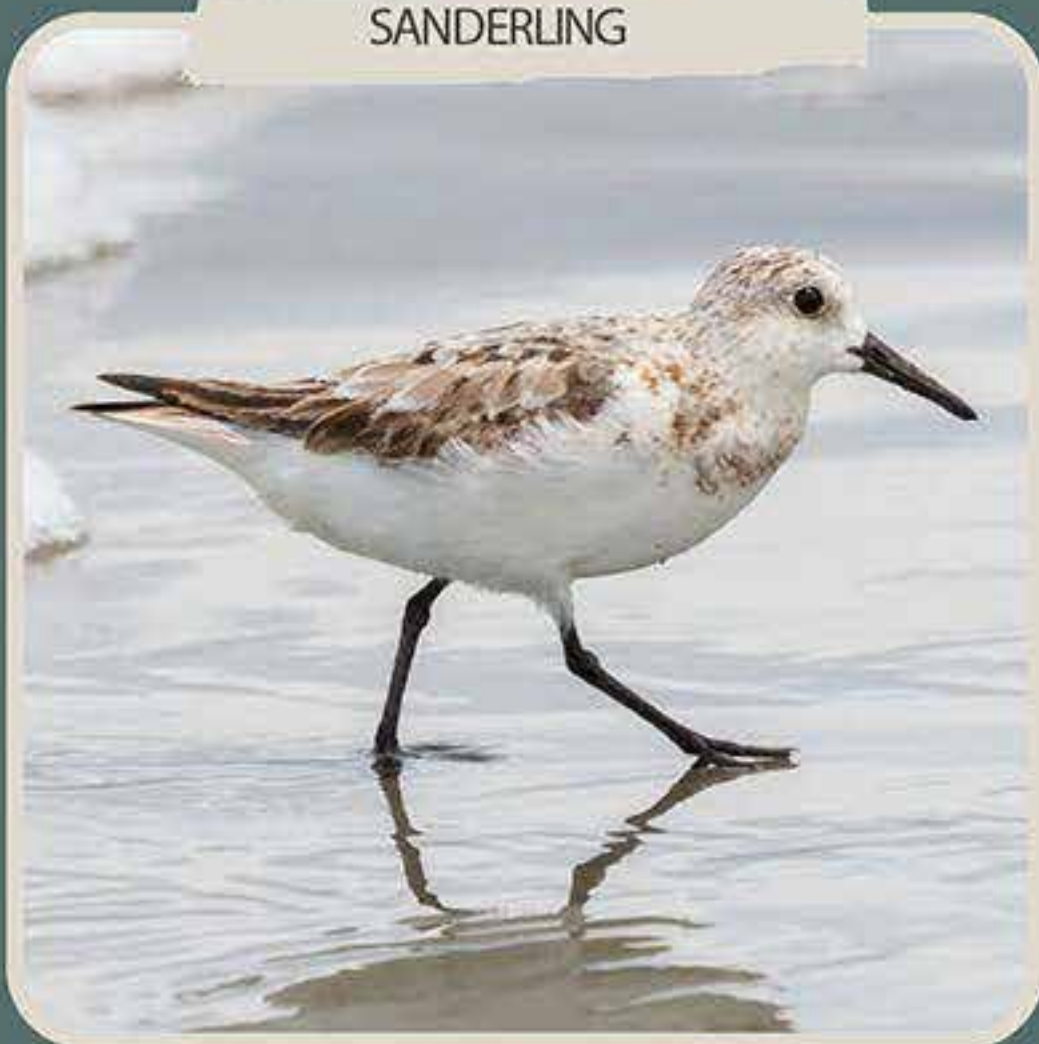


SANDERLING

Level of
Danger



What to do if
I see it?



Habits



Good
Practices



Type of
Fauna

TROPICAL KINGBIRD

Level of
Danger



What to do if
I see it?



Habits



Good
Practices



Benefits for
the
Environment



Type of
Fauna

FERRUGINOUS PYGMY OWL

Level of
Danger



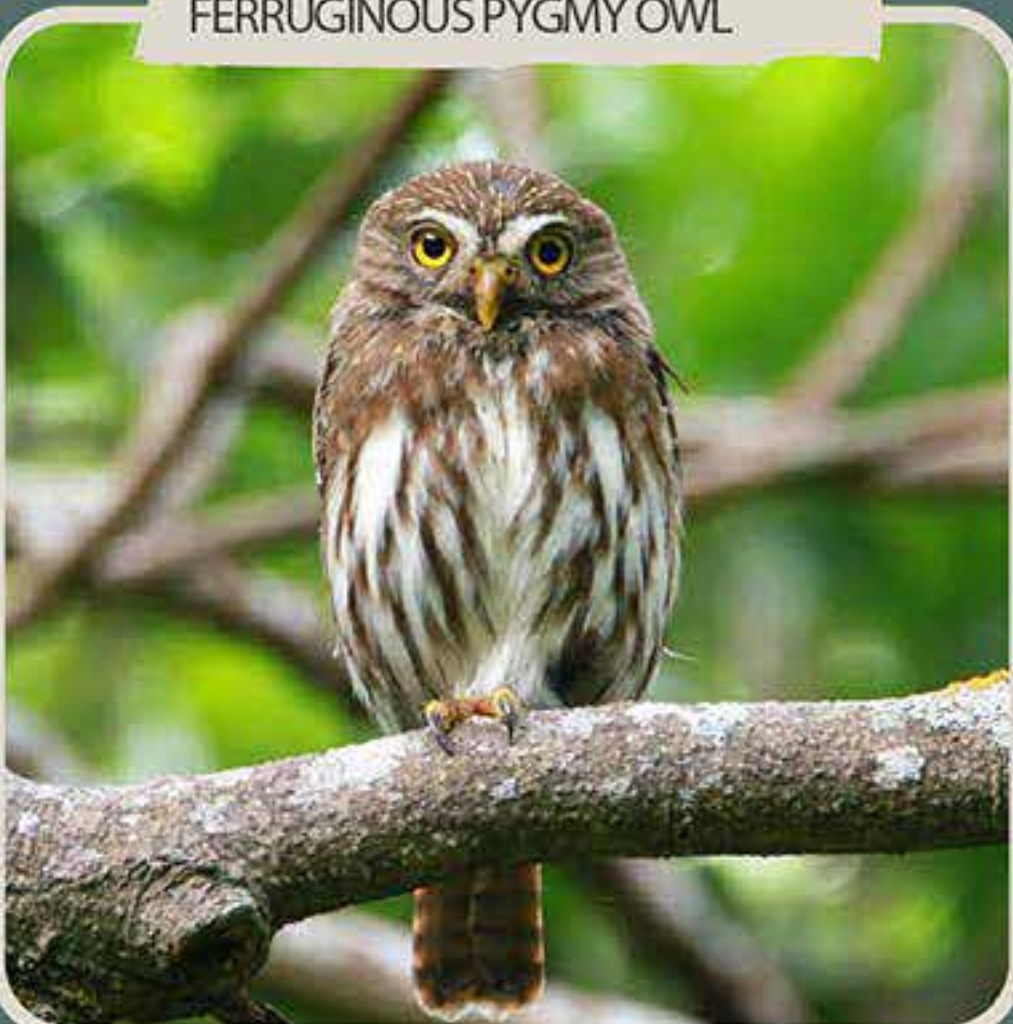
What to do if
I see it?



Benefits for
the
Envirorment



Type of
Fauna



Habits



Good
Practices



MELODIOUS BLACKBIRD

Level of
Danger



What to do if
I see it?



Benefits for
the
Envirorment



Type of
Fauna



Habits



Good
Practices



RED-EYED VIREO

Level of
Danger



What to do if
I see it?



Benefits for
the
Envirorment



Type of
Fauna

Habits



Good
Practices



MEXICAN GRACKLE

Level of
Danger



What to do if
I see it?



Benefits for
the
Envirorment



Type of
Fauna

Habits



Good
Practices



ARTRHPODS



Arthropods are invertebrate animals that are recognized by having an external skeleton. Insects, arachnids, crustaceans and butterflies belong to this group. Of the 350,000 species of insects and arachnids estimated overall for Mexico, about 95% correspond to the insect group. (González et al.).

The Sian Ka'an biosphere reserve is home to 90 species of native bees, 47 of dragonflies, 74 of beetles, 276 of crustaceans, and 310 species of mosquitoes.

COMMON BEE

Level of
Danger



What to do if
I see it?



Benefits for
the
Envirorment



Habits



Good
Practices



N

Type of
Fauna

SCORPION

Level of
Danger



What to do if
I see it?



Benefits for
the
Envirorment



Habits



Good
Practices



N

Type of
Fauna

GIANT CRAB SPIDER

Level of
Danger



What to do if
I see it?



Benefits for
the
Envirorment



Habits



Good
Practices



N

Type of
Fauna

GOLDEN SILK SPIDER

Level of
Danger



What to do if
I see it?



Benefits for
the
Envirorment



Habits



Good
Practices



N

Type of
Fauna

RED PAPER WASP

Level of
Danger



What to do if
I see it?



Benefits for
the
Environment



Type of
Fauna

Habits



Good
Practices



SAND WASP

Level of
Danger



What to do if
I see it?



Benefits for
the
Environment

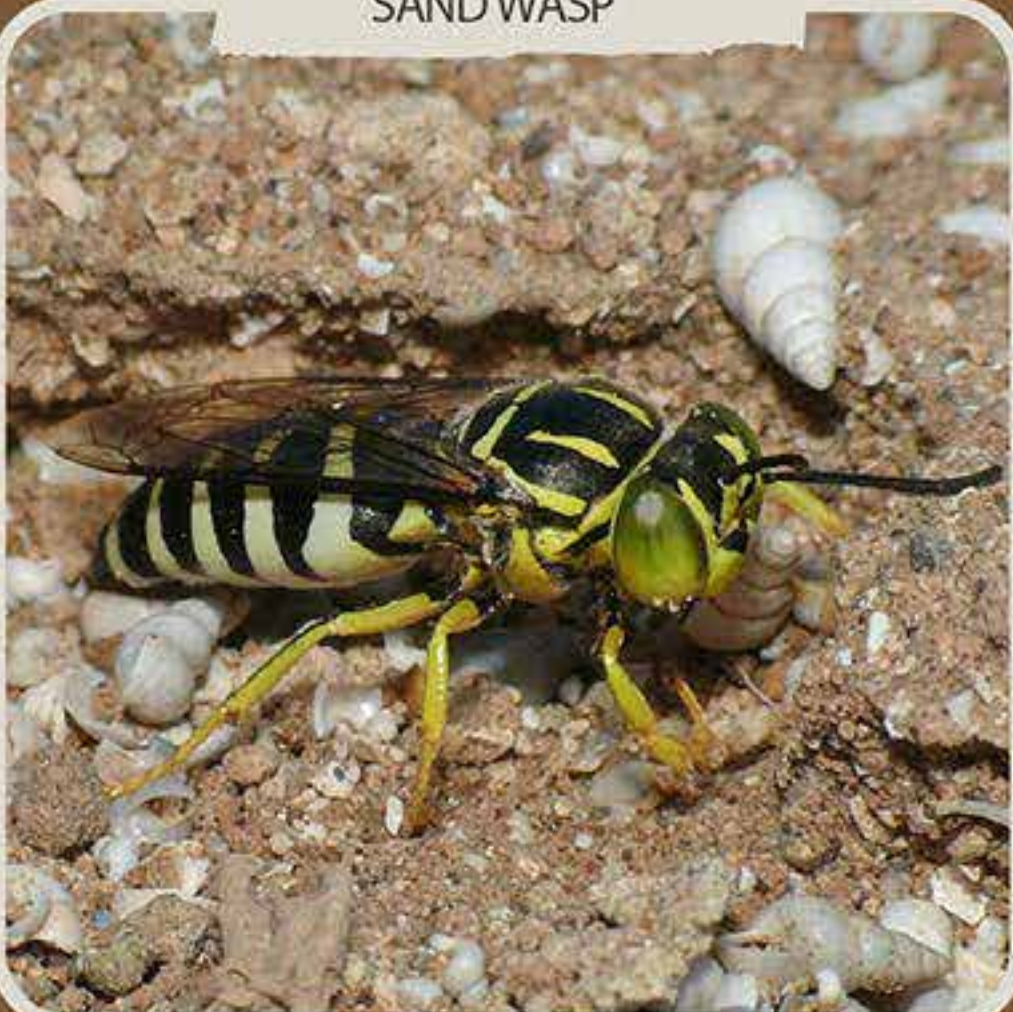


Type of
Fauna

Habits



Good
Practices



BLUE CRAB

Level of
Danger



What to do if
I see it?



Habits



Good
Practices



N

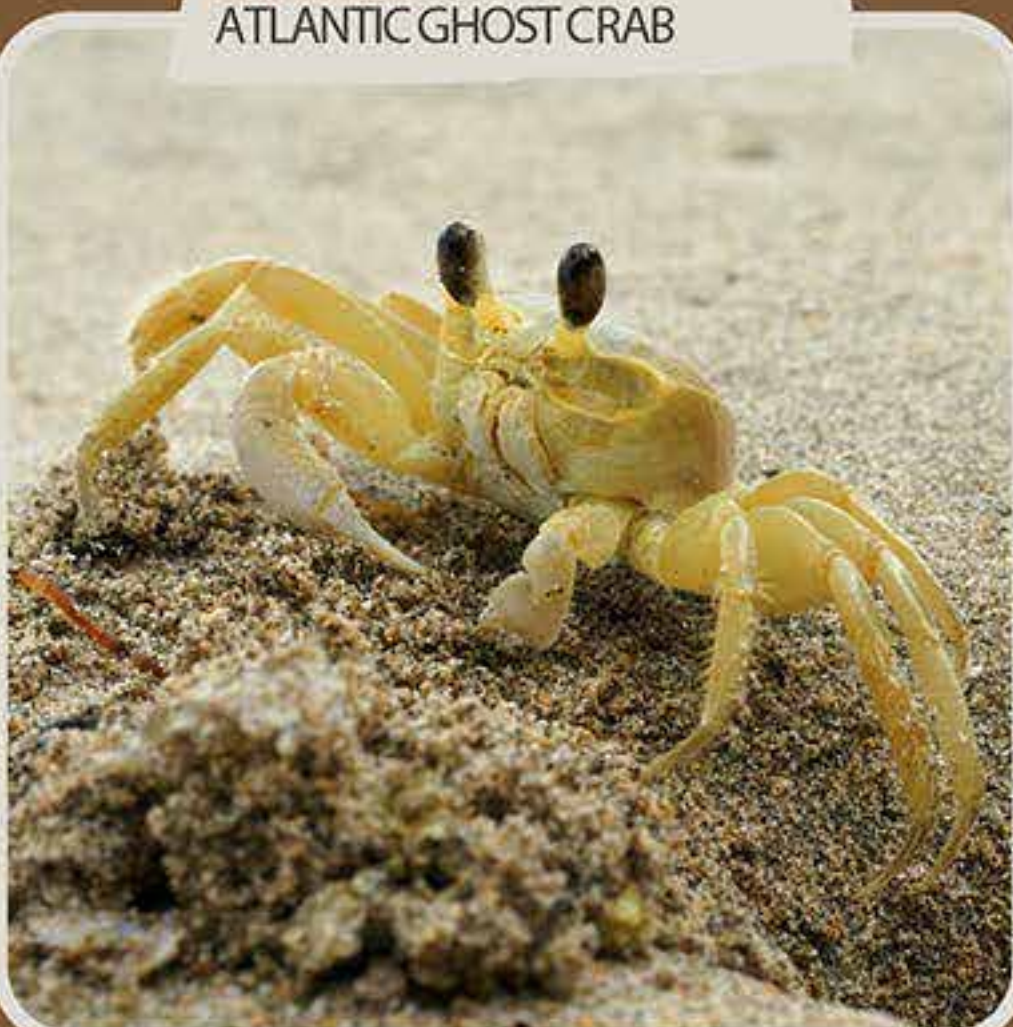
Type of
Fauna

ATLANTIC GHOST CRAB

Level of
Danger



What to do if
I see it?



Habits



Good
Practices



N

Type of
Fauna

HERMIT CRAB

Level of
Danger



What to do if
I see it?



Good
Practices



N

Type of
Fauna

LAND RED CRAB

Level of
Danger



What to do if
I see it?



Habits



Good
Practices



N

Type of
Fauna

GIANT GRASSHOPPER

Level of
Danger



What to do if
I see it?



Benefits for
the
Envirorment

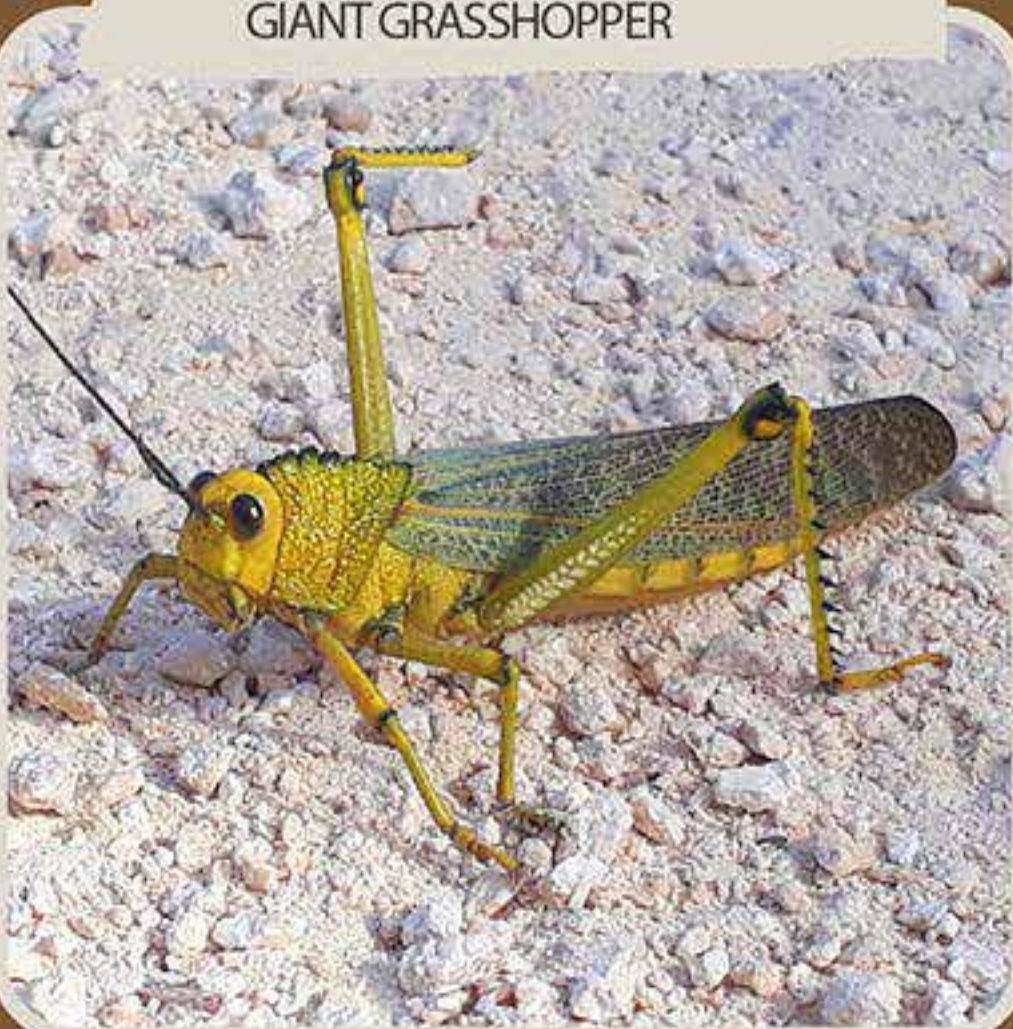


Type of
Fauna

Habits



Good
Practices



GIANT LEAF-FOOTED BUG

Level of
Danger



What to do if
I see it?



Benefits for
the
Envirorment

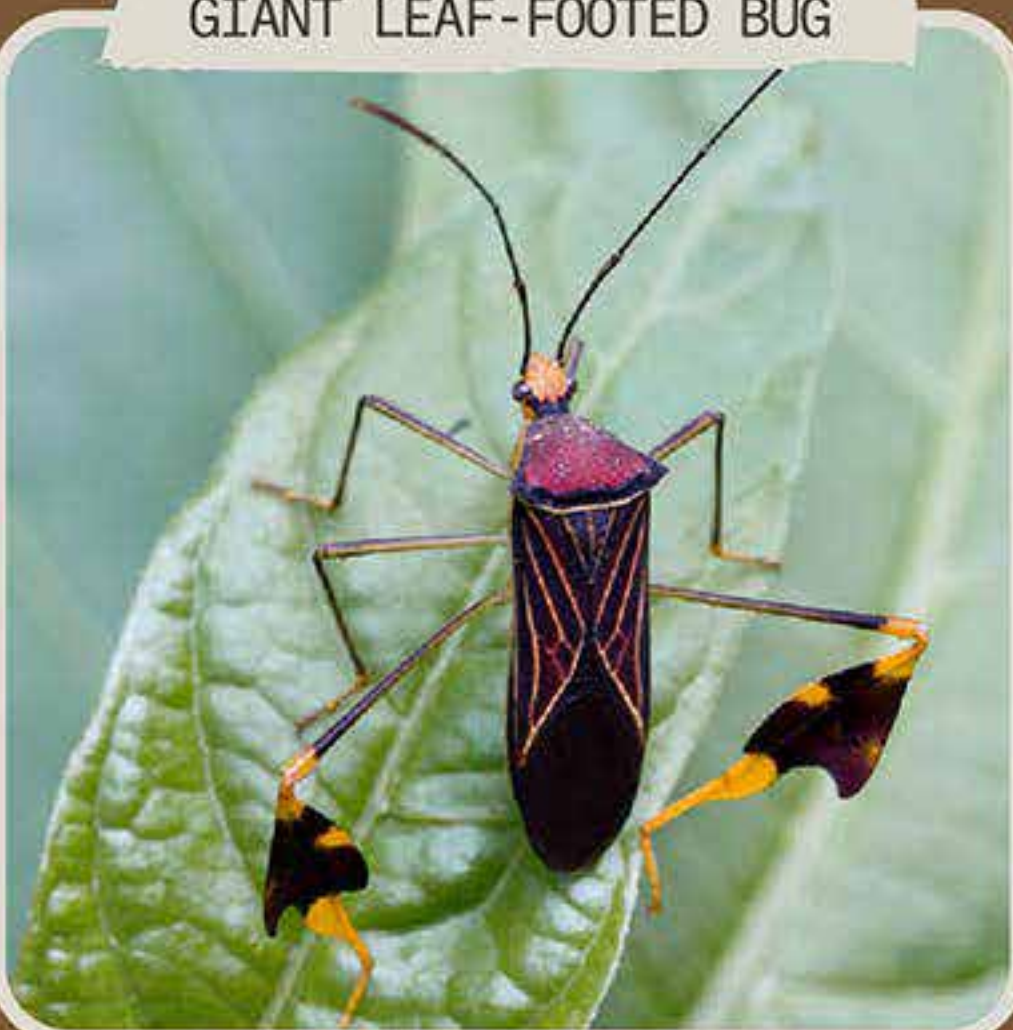


Type of
Fauna

Habits



Good
Practices



CRIMSON PATCH BUTTERFLY

Level of
Danger



What to do if
I see it?



Benefits for
the
Envirorment

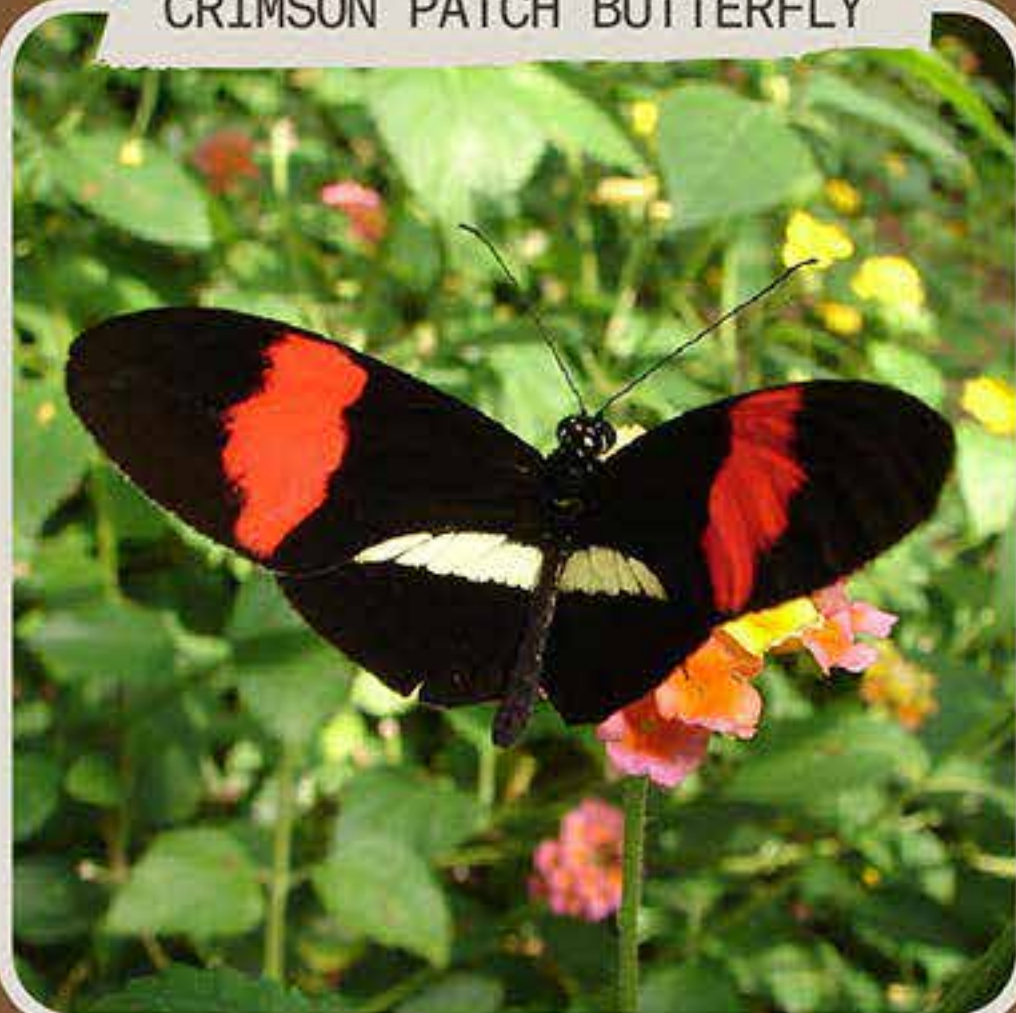


Type of
Fauna

Habits



Good
Practices



MALACHITE

Level of
Danger



What to do if
I see it?



Benefits for
the
Envirorment



Type of
Fauna

Habits



Good
Practices



FAITHFUL BEAUTY MOTH

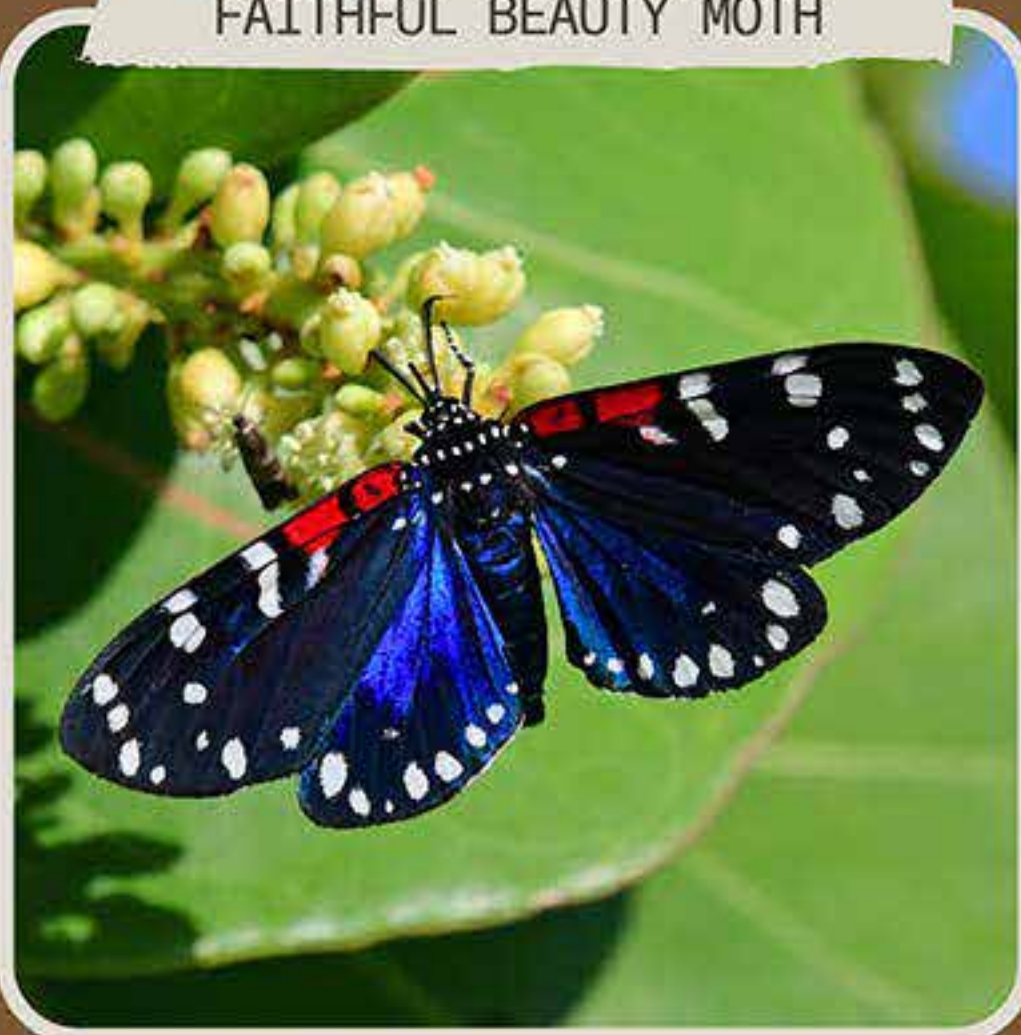
Level of
Danger



What to do if
I see it?



Benefits for
the
Envirorment



Habits



Good
Practices



N

Type of
Fauna

HORSEFLY

Level of
Danger



What to do if
I see it?



Benefits for
the
Envirorment



Habits



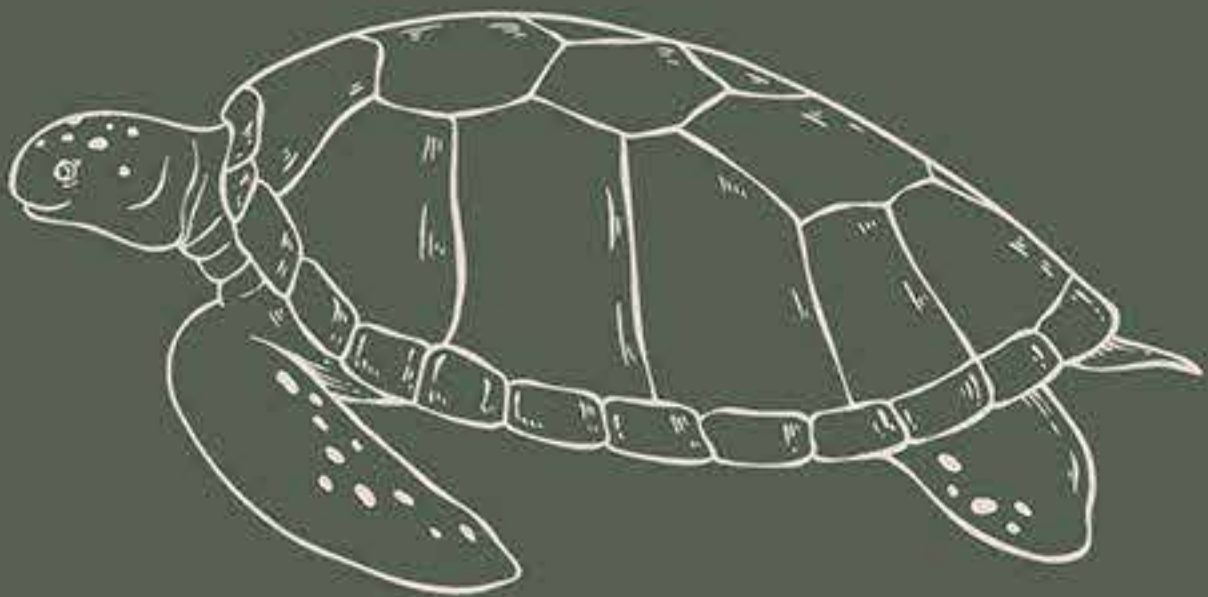
Good
Practices



N

Type of
Fauna

REPTILES AND AMPHIBIANS



Mexico is considered the second country in the world with the highest reptile diversity after Australia (PROFEPA, 2020).

In the Yucatan Peninsula you can find 147 species of reptiles, that correspond to 14% of the total in Mexico. In this area, we have 2 crocodiles, 103 lizards and snakes, and 17 sea and land turtles (Díaz-Gamboa, 2020).

In Tulum, we have the Sian Ka'an biosphere reserve, the protected area with the largest extension of natural habitat for swamp and American crocodiles (INECC, 2007).

BROWN BASILISK

Level of
Danger



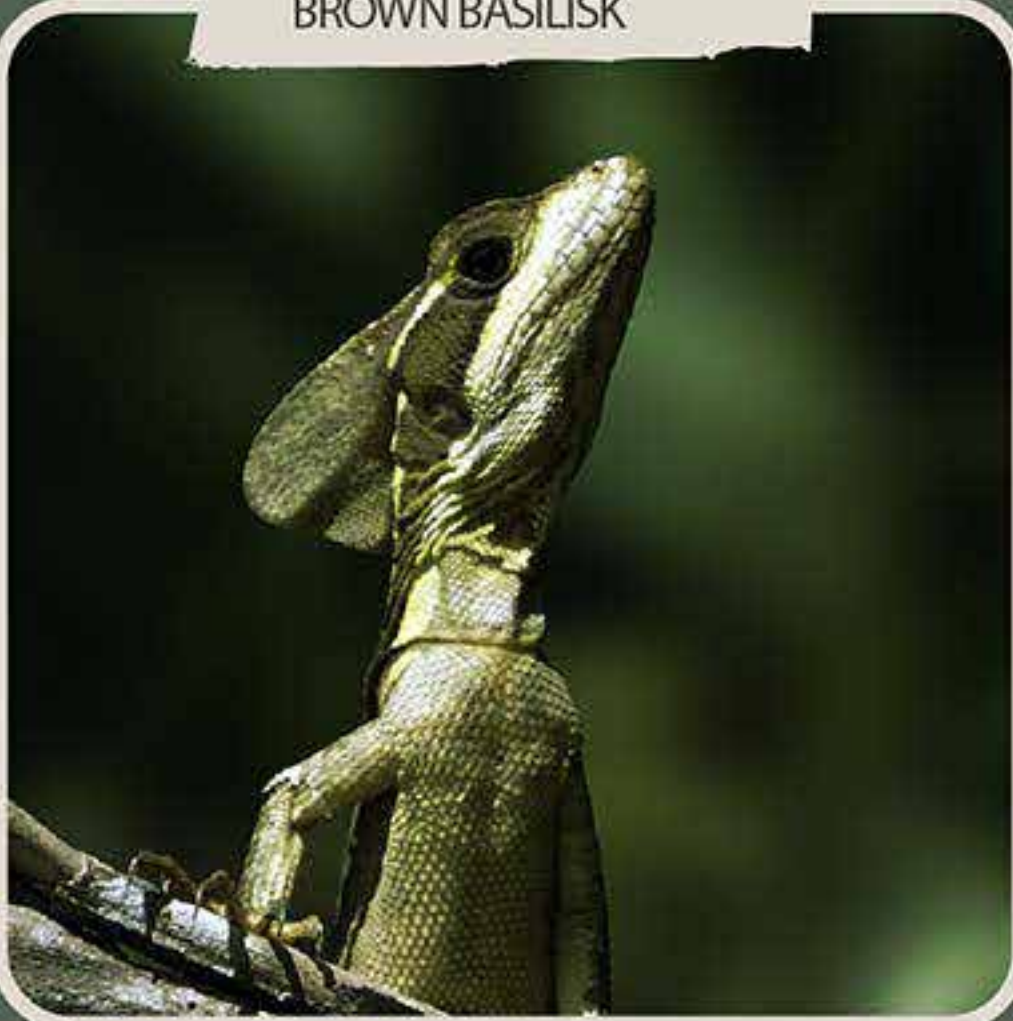
What to do if
I see it?



Benefits for
the
Envirorment



Type of
Fauna



Habits



Good
Practices



BLACK-TAILED CRIBO

Level of
Danger



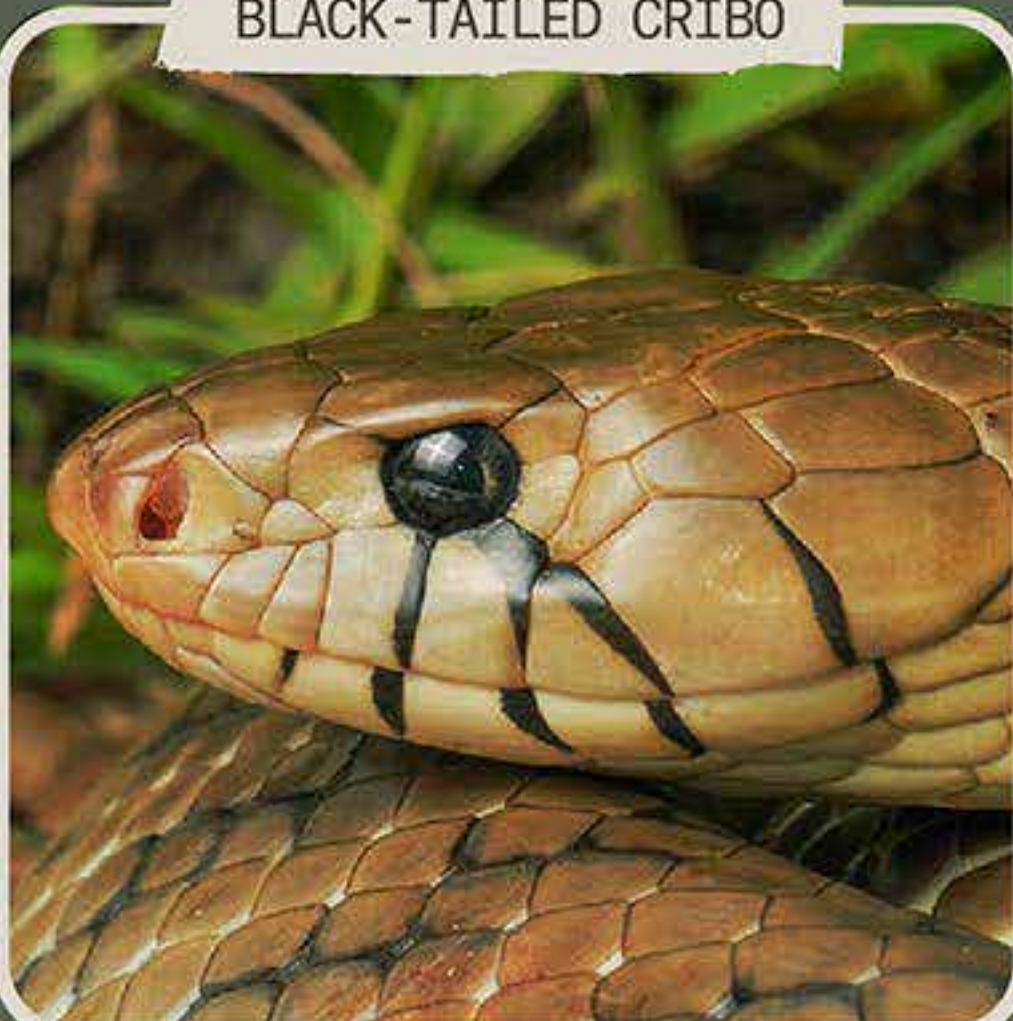
What to do if
I see it?



Benefits for
the
Envirorment



Type of
Fauna



Habits



Good
Practices

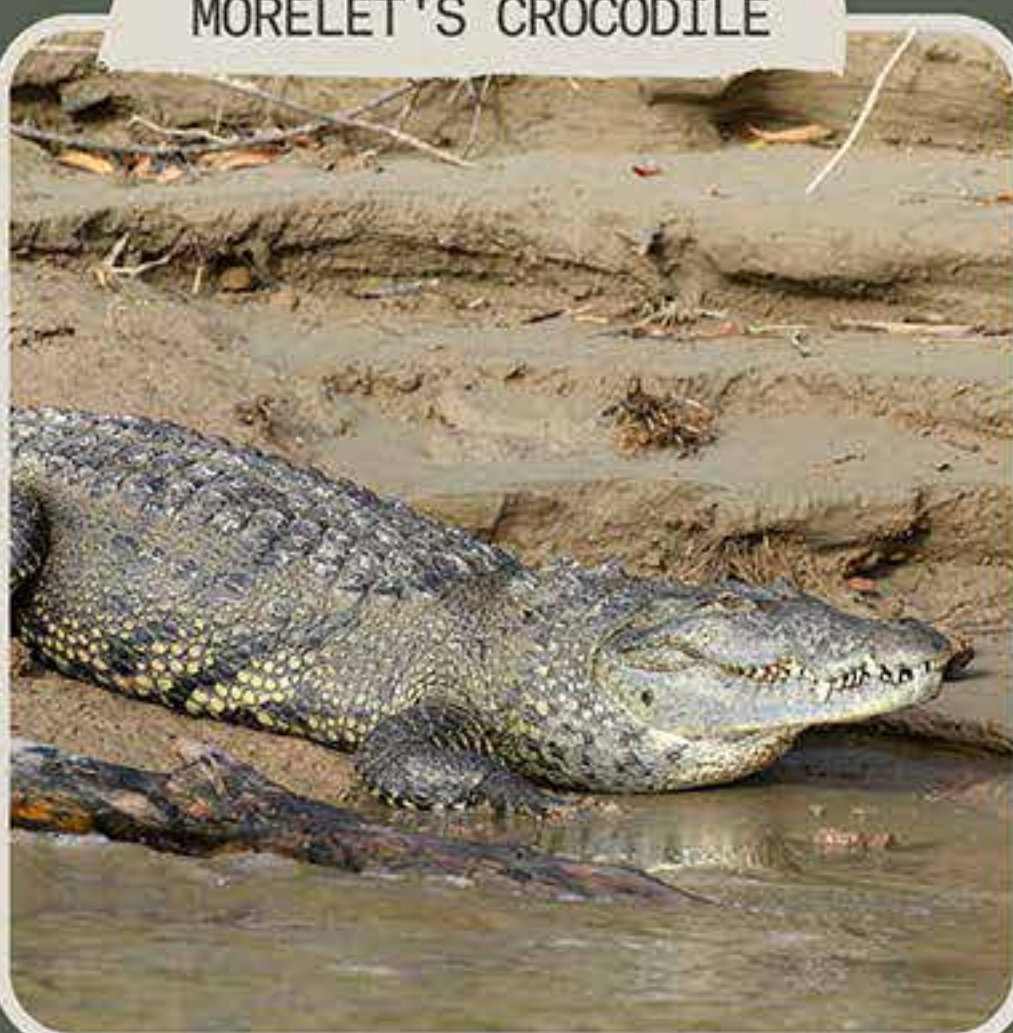


MORELET'S CROCODILE

Level of
Danger



What to do if
I see it?



Habits



Good
Practices



Others



Type of
Fauna

GREEN VINE SNAKE

Level of
Danger



What to do if
I see it?



Habits



Good
Practices



Benefits for
the
Environment



Type of
Fauna

SALMON BELLIED RACER SNAKE

Level of
Danger



What to do if
I see it?



Habits



Practices



Benefits for
the
Environment



Category



Others



Type of
Fauna

MEXICAN PARROT SNAKE

Level of
Danger



What to do if
I see it?



Habits



Good
Practices



Benefits for
the
Environment



Category



Others



Type of
Fauna

PENINSULA STRIPELESS SNAKE

Level of
Danger



What to do if
I see it?



Benefits for
the
Environment



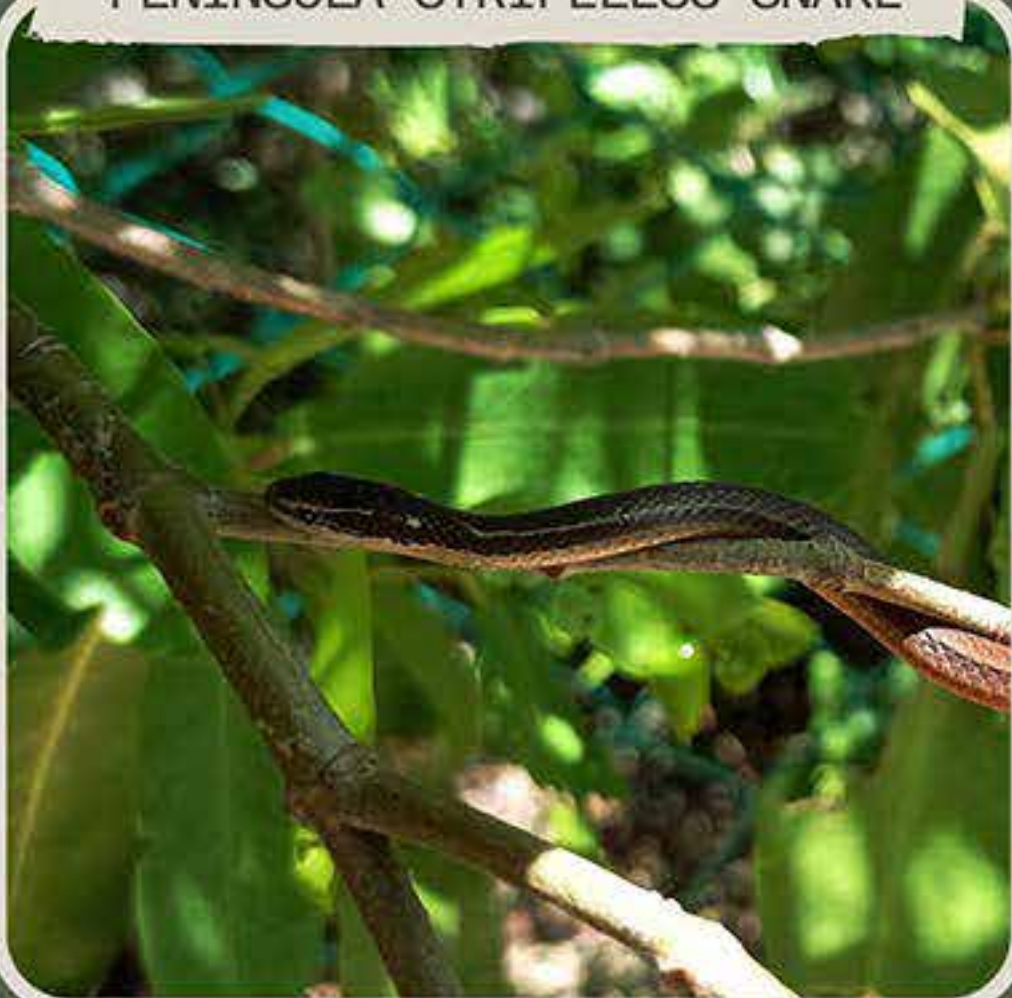
Habits



Good
Practices



Type of
Fauna



BLACK SPINY TAILED IGUANA

Level of
Danger



What to do if
I see it?



Benefits for
the
Environment



Habits



Good
Practices



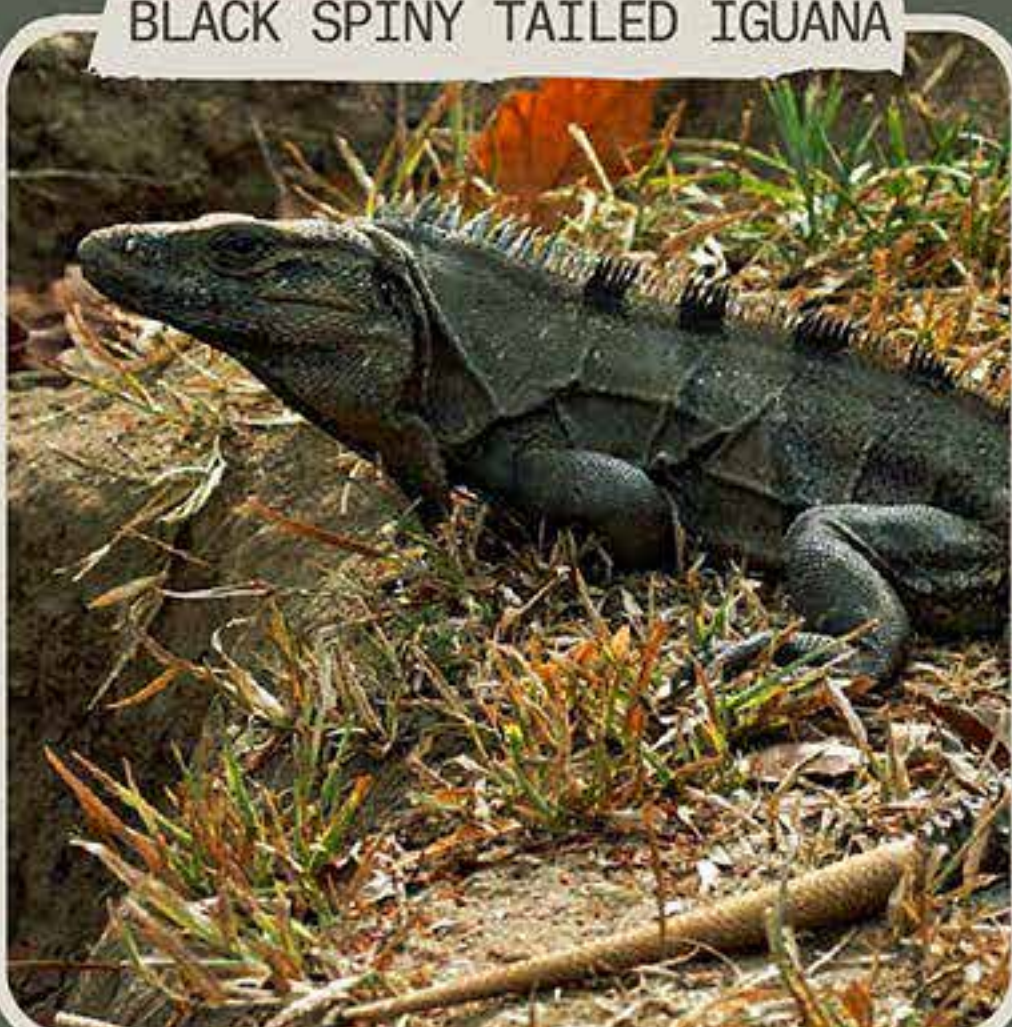
Type of
Fauna



Category



Others

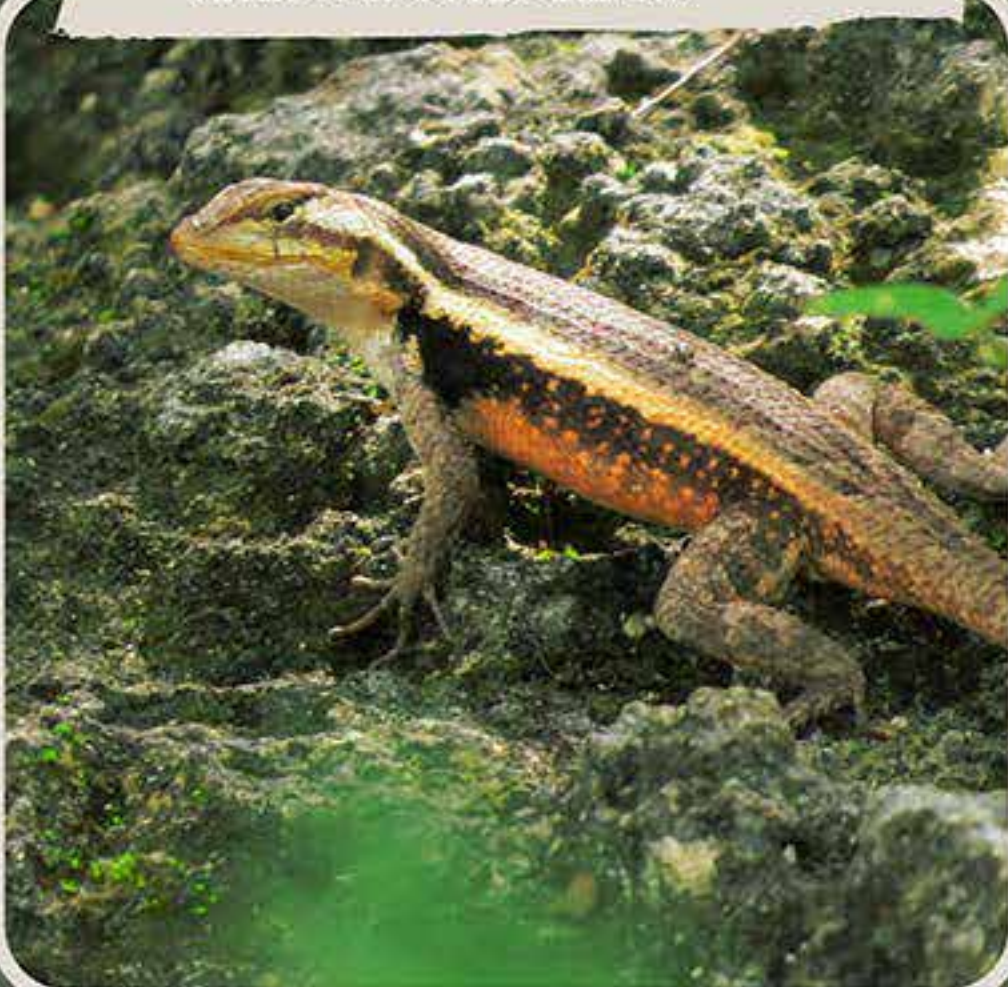


YELLOW SPOTTED LIZARD

Level of
Danger



What to do if
I see it?



Habits



Good
Practices



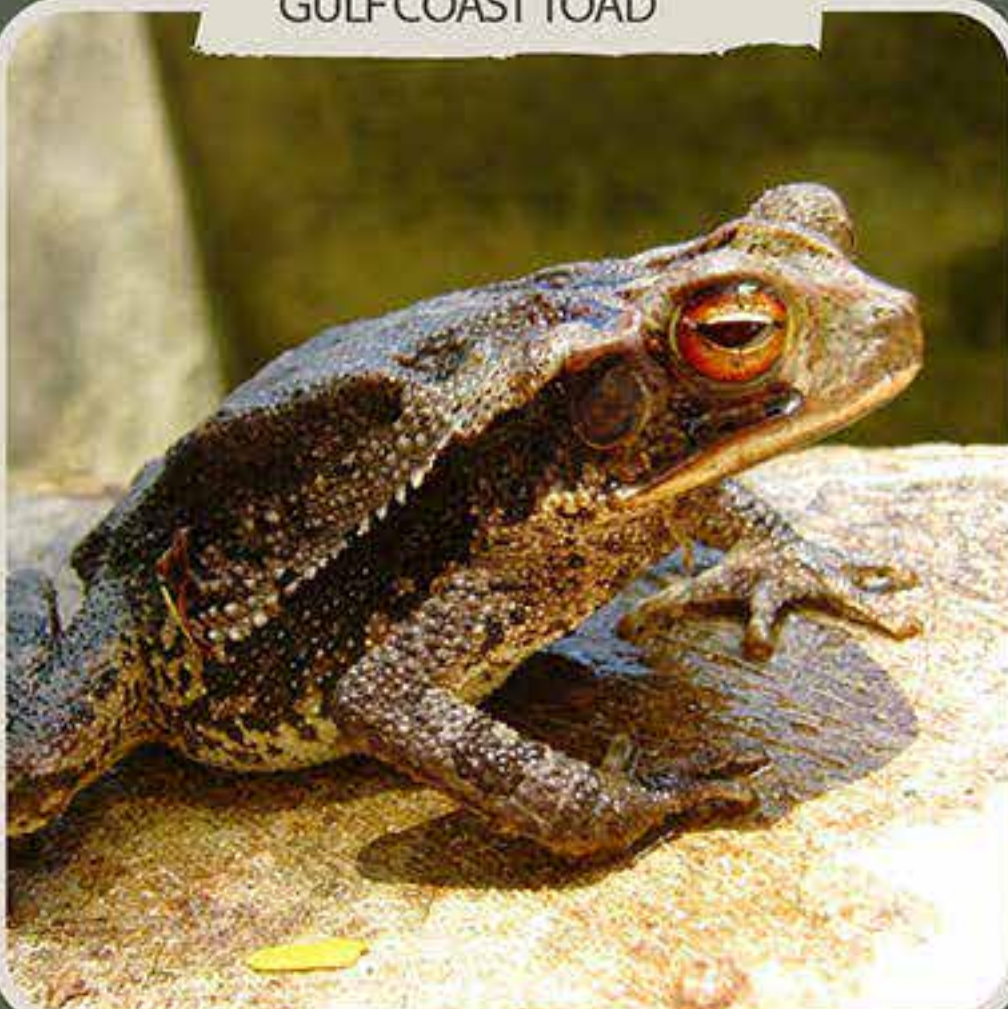
Type of
Fauna

GULF COAST TOAD

Level of
Danger



What to do if
I see it?



Habits



Good
Practices



Type of
Fauna

LOGGERHEAD SEA TURTLE

Level of
Danger



What to do if
I see it?



Habits



Good
Practices



Category



Others



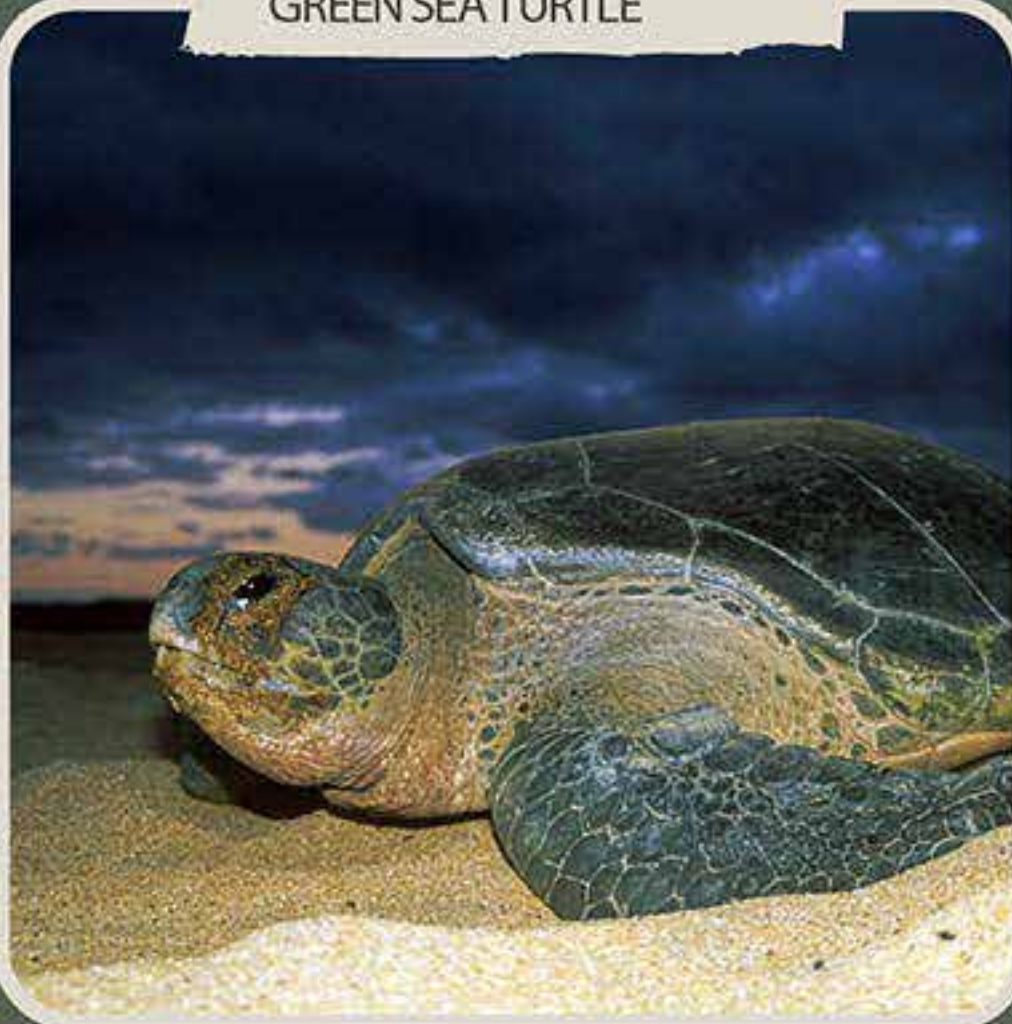
Type of
Fauna

GREEN SEA TURTLE

Level of
Danger



What to do if
I see it?



Habits



Good
Practices



Category



Others



Type of
Fauna

GLOSSARY

• **IN DANGER (ID):** A species is considered Endangered when the best available evidence indicates that it meets any of the criteria "A" to "E" for Endangered (see Section V) and is therefore considered to be facing a very high risk of extinction in the wild (IUCN, 2022).

• **VULNERABLE (VU):** An individual is Vulnerable when the best available evidence indicates that it meets any of the criteria "A" to "E" for Vulnerable (see Section V) and is therefore considered to be facing a high risk of extinction in the wild (IUCN, 2022).

• **THREATENED (T) | 912 SPECIES IN MEXICO:** Those species, or populations thereof, that could be in danger of disappearing in the short or medium term, if the factors that negatively affect their viability continue to operate, by causing the deterioration or modification of their habitat or directly reducing the size of their populations. (This category partially coincides with the vulnerable category of the IUCN classification) (CONABIO, 2022).

• **SPECIES UNDER SPECIAL PROTECTION (SP) | 1183 SPECIES IN MEXICO:** Those species or populations that could be threatened by factors that negatively affect their viability, so the need to promote their recovery and conservation or the recovery and conservation of populations of associated species is determined. (This category may include the lowest risk categories of the IUCN classification) (CONABIO, 2022).

•CRITICALLY THREATENED (CT) | 535 SPECIES IN MEXICO

Those species whose distribution areas or size of their populations in the national territory have drastically decreased, putting at risk their biological viability throughout their natural habitat, due to factors such as destruction or drastic modification of habitat, unsustainable use, diseases or predation, among others. (This category partially coincides with the Critically Endangered and Endangered categories of the IUCN classification) (CONABIO, 2022).

SPECIAL THANKS

We thank the members of Biodiversidad y Cultura Ambiental Tulum A.C. Fernando Rosado, Gabriel Castillo and Jotzalin Valencia, and the collaborators of the Corporate Social Responsibility (CSR) department of Nômade Group Karla Espinoza and Thonatiu Meza for authorizing the use of some of their photographs for the elaboration of this Fauna Catalog.

BIBLIOGRAPHICAL REFERENCES

Luis Diaz Gamboa. 2020, de la importancia de la península de Yucatán, Retrieved from ISSUU on November 10, 2022. [pronaturapeninsuladeyucatan](#)
Publisher Publications - Issuu

Mundo Maya, Fauna. FAUNA - Mundo Maya
([gomundomaya.com](#))

De la Garza, David. 2017, ANIMALES SAGRADOS DE LA CULTURA MAYA, Recuperado del Blog Xcaret el 3 de noviembre del 2022 Animales sagrados de la cultura maya (xcaret.com)

Procuraduría Federal de Protección al Ambiente (PROFEPA), Mamíferos en México (Segunda parte). Mamíferos en México (Segunda parte) | Procuraduría Federal de Protección al Ambiente | Gobierno | gob.mx (www.gob.mx)

Comisión Nacional para el Conocimiento y Uso de la Biodiversidad (CONABIO), Aves de México. Aves de México | Biodiversidad Mexicana

International Union for Conservation of Nature and Natural Resources (UICN), IUCN 2022. The IUCN Red List of Threatened Species. Versión 2022-1. IUCN Red List of Threatened Species

Comisión Nacional para el Conocimiento y Uso de la Biodiversidad (CONABIO), Categorías de riesgo en México. Categorías de riesgo en México | Biodiversidad Mexicana

ISSU. 2020, LA DIVERSIDAD DE MAMÍFEROS en la península de Yucatán, Recuperado de ISSUU el 10 de Noviembre del 2022. La diversidad de mamíferos terrestres y voladores – Issuu

Díaz-Gamboa, Luis. (2020). Biodiversidad de anfibios y reptiles de la Península de Yucatán y su importancia.

Pozo de la Tijera, Carmen, & Escobedo Cabrera, José Enrique. (1999). Mamíferos terrestres de la Reserva de la Biosfera de Sian Ka'an, Quintana Roo, México. Revista de Biología Tropical, 47(1-2), 251-262. Retrieved November 11, 2022, from http://www.scielo.sa.cr/scielo.php?script=sci_arttext&pid=S0034-77441999000100026&lng=en&tlng=es.

Pixabay, increíbles Imágenes Gratis Para Descargar Más de 1 millón de Imágenes Gratis para Descargar - Pixabay

OUR VALUES

Nômade's success lies in being faithful to its transformational commitment. We summon our visitors through the hotel industry, but we are a laboratory of human emotions.

Our narrative is grounded in the bond. We've been able to materialize a space of bond and co-creation in order to awaken to a fuller life, and we did it in a completely disruptive way for the industry.

SOCIAL RESPONSIBILITY AND
SUSTAINABILITY DEPARTMENT
-FLORA AND FAUNA-

NÔMADE
TEMPLE

Destination

